



**Zebra-knee Tarantula**



pic 2.

- This Spider is an original souvenir. The spider resembles an authentic Costa Rican Zebraknee tarantula; a living prototype is shown in pic 3.
- The spider is crocheted from mohair; the body is stuffed with fiberfill, and the paws are set on a flexible wire frame.
- The Spider can serve as a bright interior detail, as an original prop item for photo sessions, as a gift to a friend, or become a visual aid for a child who learns the diversity of wildlife.

## Thank you for purchasing my crochet pattern!

The pattern is suitable for those with an intermediate level of crochet skills and a basic understanding of terms and techniques.

If something is unclear or there are difficulties, please get in touch with me; I'll be glad to help you.

I wish you pleasant work and excellent results!



pic 3.

## Materials and tools

1. Yarn „Alize Kid Royal“ Turkey; 62 % - kid mohair, 38 % - polyamide; thickness is 50g / 500 m. 1.76 oz / 547 yds; Three colors: Black 60, Beige 314, and Gray 52. You will need about 1.8 oz / 50 gr of yarn.
2. Fiberfill.
3. Crochet hook - 0.06'' (1.5 mm).
4. Markers for marking control points.
5. Tapestry needle with a blunt tip and a large eye.

6. Thin strong thread for sewing parts together.
7. Needle for felting.
8. Sewing needle.
9. Plastic eyes or beads - 4 pcs .
10. Coated metal wire diam 0.06'' (1.5 mm), 50'' (130 cm) long
11. Pliers.
12. Sticky tape.



### ❖ Gauge

- 10 sts x 10 rows to 1.2``x 1.2`` (3 x 3 cm)

### ❖ Some tips:

- The spider is crocheted using mohair yarn, folded in 2 threads.
- The Tarantula looks more natural due to the combination of threads of different colors.
- The «Head & Chest,» as well as the abdominal part, is crocheted in Rounds.
- Spider paws are crocheted in Rows.
- Use a stitch marker to mark the beginning of each round. The round must be ended before the loop where the marker is inserted.
- Once you've finished the round, move the marker to the loop on the hook.

**Note: If you want to print a pattern and you do not need pictures, then the pgs 22-30 are for this.**

### ❖ **Parts of the item:**

1. Abdominal part.
  2. „Head & Chest“ part.
- \*The front, rounded, and denser part of the detail is the «head»; the rest is the «chest.»
3. Jaw (chelicerae).
  4. Small paws (pedipalps).
  5. Big paws.

### ❖ **Symbols & explanations:**

**Sc - Single crochet** \*Insert hook in indicated stitch, yo, pull through loop, yo and pull through both loops on the hook.

**Inc -Increase** \*2 stitches in one space.

**Dec -Decrease** \*One st combining two spaces.

**Sl St - Slip Stitch** \* Insert hook in indicated stitch, yo and pull through both loops on the hook.

**Ch - Chain stitch.**

**Rd (s) – round (s).**

**Row (s) – row(s).**

**St (s) – stitch(es).**

**BLO – back loop only.**

**FLO- front loop only.**

**In two loops\*** is the standard way of crocheting when the hook is inserted in 2 loops (both front and back) at once.

[...] - the number in brackets indicates the number of posts that should be obtained after crocheting a row (SlSt and Ch are not counted).

(...) \* n means repeating the action in brackets n times or to the end of the row/rd.

**Crochet in Rounds:** when you crochet spiral rounds, you do not have to turn your work and you do not join the round. Use a stitch marker to mark the beginning of each round, and move the marker up each time you start a new round.

**Crochet in Rows:** when you crochet in rows, you need to turn your work, make your turning chain, and start back across the row. The beginning chain does not count as a stitch unless specified in the text.



## Abdomen

- Crochet in Rounds in the two loops.
- two beige threads.

Crochet a chain of 14 Ch, join it into a ring (pic 5).

**1 rd.** 14 Sc, in each loop of the chain [14] (pic 6).

➤ 1 black thread, 1 beige.

**2 rd.** (1 Sc, 1 Inc) \*7 [21] (pic 7).

➤ 1 black thread, 1 gray .

**3 rd.** (2 Sc, 1 Inc) \*7 [28] (pic 8).

**4 rd.** (3 Sc, 1 Inc) \*7 [35].

➤ 2 black threads.

**5 rd.** (4 Sc, 1 Inc) \*7 [42].

**6 rd.** (5 Sc, 1 Inc) \*7 [49] (pic 9).

**7 rd.** (6 Sc 1 Inc) \*7 [56].

**8-17 rds.** 56 Sc [56] (pic 10).

**18 rd.** (6 Sc, 1 Dec) \*7 [49].

**19 rd.** (5 Sc, 1 Dec) \*7 [42].



pic 4.



pic 5.



pic 6.



pic 7.



pic 8.



pic 9.



pic 10.

- 20 rd.** (4 Sc, 1 Dec) \*7 [35].
- 21 rd.** (3 Sc, 1 Dec) \*7 [28].
- 22 rd.** 28 Sc [28].
- 23 rd.** (2 Sc, 1 Dec) \*7 [21].
- 24 rd.** 21 Sc [21].
- one black thread, one gray .
- 25 rd.** (1 Sc, 1 Dec) \*7 [14].
- 26 rd.** 14 Sc [14] **(pic 11)**.
- one black thread, one beige.
- 27 rd.** (1 Sc, 1 Dec) \*4, 2 Sc [10] **(pic 12)**.
- 28 rd.** 5 Dec [5] **(pic 13)**.



pic 11.

- Crochet, all the remaining loops together, cut the thread, thread it through the loop on the hook, tighten it, and hide it in the workpiece.
- Stuff the detail with fiberfill through the hole **(pic 14)**.



pic 12.



pic 13.



pic 14.

## Head & Chest

The spider's «head & chest» (**pic 15**) is the main detail to which all the others are sewn. It has a rounded, slightly flattened shape. The upper part of the detail is the «head,» and you will attach the eyes right there ( **dotted line, pic 15**). The lower part of the detail is the «chest,» and you will attach the paws to that part.

The work rules:

- Crochet with single crochet (Sc); the hook is inserted in two loops.
- Crochet the central part of the detail, except for the "head" in Rounds (without SISt and Ch).
- Use a marker to mark the beginning of the round.
- The round must be ended before the loop with the marker.
- Once you've finished the round, move the marker to the loop on the hook.
- Start crocheting from the "back" of the spider.

➤ two black threads

**1 rd.** 13 Sc in a Magic Ring [13] (**pic 16**).

**2 rd.** (1 Sc, 1 Inc) \*6, 1 Sc [19].

**3 rd.** (2 Sc, 1 Inc) \*6, 1 Sc [25].

**4 rd.** (2 Sc, 1 Inc) \*8, 1 Sc [33].

**5 rd.** (2 Sc, 1 Inc) \*11 [44] (**pic 17**).

**6 rd.** (2 Sc, 1 Inc) \*14, 2 Sc [58].

It turned out to be a spider's back (**pic 18**).

Now, let's crochet a head.



pic 15.



pic 16.



pic 17.



pic 18.

➤ Crochet the "head" in Rows

Leave the marker indicating the beginning of the row in its place (**M1 in pic 19**).

**1 row.** 1 Ch, 1 Sc, 1 Dec, 4 Sc, 1 Dec, 1 Sc, turn [8].

After crocheting the 1st row, hang another marker (**M2 in pic 21**)

**2 row.** 1 Ch, 1 Sc, 1 Dec, 2 Sc, 1 Dec, 1 Sc, turn [6].

**3 row.** 1 Ch, 1 Sc, 2 Dec, 1 Sc [4].

You've got a „bulge“ (**pic 19**) - it will be the "head" of the spider, the place where the eyes will be located. The boundaries of this part are marked with markers **M1** and **M2**. Then crochet the whole piece in a Round.

➤ Use a combination of threads: one black thread, and one gray thread.

➤ The red arrow shows the direction of crocheting.

Point **A** is the point where we stopped; from this point, we shall crochet further:

1. 1 Ch, 3 Sc along the lateral side of the „bulge“ (**from point A to marker M2**)

2. Next, crochet 48 Sc in a circle up to marker **M1** (there should be 48 Sc between markers).

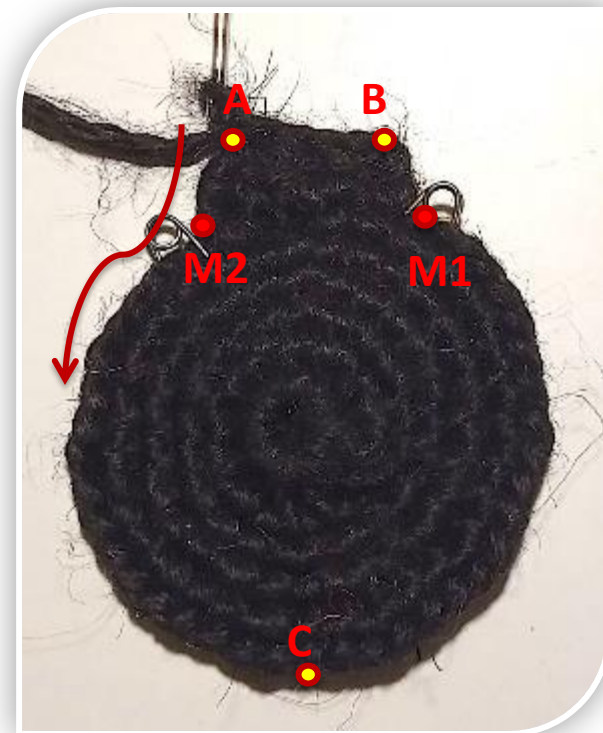
➤ For every eighth stitch, crochet two rounds lower (except for the 48th).

3. 3 Sc from the lateral side of the „bulge“ (between the M1 marker and point B).

4. 1 Ch, 4 Sc, 1 SlSt along the upper part of the „bulge“ (**segment A-B**).

Cut the thread, pull the end through the loop on the hook, and hide it in the workpiece. If you do everything right, there are 58 Sc in the circle (**pic 20**).

You've crocheted the upper part of the «head & chest» detail (**pic 21**), now crochet the lower one.



pic 19.



pic 20.



pic 21.



Start to crochet the lower part from point **C (pic 19)**.

➤ one black thread, one beige

**1,2 rds.** 58 Sc [58] (pic 22).

➤ two black threads

**3,4 rds.** 58 Sc [58] (pic 23).

➤ Hold the detail so that the front side is outside, then the part does not have to be turned out.

**5-8 rds.** (2 Sc, 1 Dec), repeat until the end of the 8th rd [17].

➤ After row 7, stuff the detail with fiberfill, starting from the „offshoot“; try to fill it tightly, giving the desired shape, making it easier to attach the eyes.

**9 rd.** (1 Sc, 1 Dec) [13].

**10 rd.** (1 Sc, 1 Dec) [9] (pic 25).

Get the remaining loops on a thread, cut it, then tighten and fasten the thread and hide the end into the workpiece.

The detail «head & chest» is ready.



pic 22.



pic 23.



pic 24.



pic 25.

## Jaw

- two gray threads
  - 1 rd.** 5 Sc in a Magic Ring [5] (**pic 26**).
  - 2 rd.** 5 Inc [10] (**pic 27**).
  - one gray threads , one black
  - 3,4 rds.** 10 Sc [10] (**pic 28**).
  - one black threads ,one beige
  - 5,6 rds.** 10 Sc [10] (**pic 29**).
  - two black threads
  - 7 rd.** 10 Sc (**pic 30**).
- Cut the thread and fasten it.
- two beige threads



pic 26.



pic 27.



pic 28.



pic 29.



pic 30.



pic 31.



pic 32.



pic 33.



pic 34.

## Paws

The spider has 5 pairs of paws, fore big and one small.

➤ Crochet all paws in Rows , from two colors of yarn.

### ❖ Big paw ( 4 pcs)

➤ two black threads

➤ In two loops

**1 row.** 4 Sc in a Magic Ring, 1 Ch, turn [4] (pic 35).

**2-6 rows.** 4 Sc, 1 Ch, turn [4] (pic 36).

➤ two beige threads

➤ BLO

**7 row.** 4 S1St, 1 Ch, turn [4] (pics 37, 38).

➤ FLO

**8 row.** 4 S1St, 1 Ch, turn [4] (pics 39, 40).

➤ two black threads

➤ BLO

**9 row.** 4 Sc, 1 Ch, turn [4] (pics 41, 42).

➤ In two loops

**10 row.** 2 Sc, 1 Inc, 1 Sc, 1 Ch, turn [5].

**11-16 rows.** 5 Sc, 1 Ch, turn [5] (pic 43).



pic 35.



pic 36.



pic 37.



pic 38.



pic 39.



pic 40.



pic 41.



pic 42.



pic 43.



pic 44



pic 45



pic 46



pic 47.

➤ two beige threads.

➤ BLO.

**17 row.** 2 SISt, <1 SISt> crochet 2 rows lower, 2 SISt, 1 Ch, turn [5] (pics 44-47).

➤ FLO

**18 row.** 5 SISt, 1 Ch, turn [5] (pic 48).

➤ two black threads.

➤ BLO.

**19 row.** 1 Sc, 2 Inc, 2 Sc, 1 Ch, turn [7].

➤ In two loops.

**20-26 rows.** 7 Sc, 1 Ch, turn [7] (pic 49).

➤ two beige threads,

➤ BLO

**27 row.** 7 SISt, 1 Ch, turn [5].

➤ FLO

**28 row.** 7 SISt, 1 Ch, turn [8] (pic 50).



pic 48.



pic 49.



pic 50.



pic 51.

➤ two black threads

➤ BLO

**29 row.** 3 Sc, 1 Inc, 3 Sc, 1 Ch, turn [8].

➤ In two loops

**30-34 rows.** 8 Sc, 1 Ch, turn [8] (pic 51).



pic 52.

two beige threads

➤ BLO

**35 row.** 8 SISt, 1 Ch, turn [8].

➤ FLO

**36 row.** 8 SISt, 1 Ch, turn [8] (pic52).



pic 53.

➤ two black threads

➤ BLO

**37 row.** 4 Sc, 1 Inc, 3 Sc, 1 Ch, turn [9].

➤ In two loops

**38 - 42 rows.** 9 Sc, 1 Ch, turn [9].

**43 row.** 1 Sc, 1 Dec, 3 Sc, 1 Dec, 1 Sc, 1 Ch, turn [7].

**44 row.** 1 Sc, 5 Inc, 1 Sc, 1 Ch, turn [12] (pic 53).



pic 54.

➤ two beige threads

➤ BLO

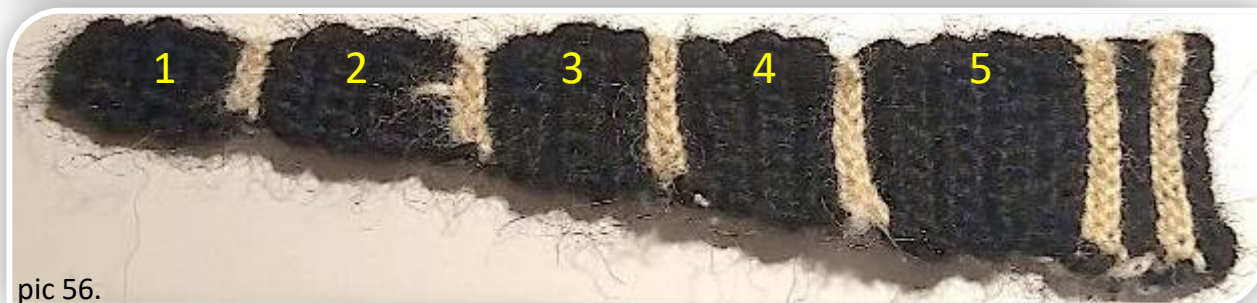
**45 row.** 12 SISt, 1 Ch, turn [12].

➤ FLO

**46 row.** 12 SISt, 1 Ch, turn [12] (pic 54).



pic 55.



pic 56.



pic 57.



pic 58.

➤ two black threads

➤ BLO

**47 row.** 12 SISt, 1 Ch, turn [12].

➤ FLO

**48 row.** 12 SISt, 1 Ch, turn [12] (pic 55).

➤ two beige threads

➤ BLO

**49 row.** 12 SISt, 1 Ch, turn [12].

➤ FLO

**50 row.** 12 SISt, 1 Ch, turn [12].

➤ two black threads

➤ BLO

**51 row.** 12 SISt, 1 Ch, turn [12].

➤ FLO

**52 row.** 12 SISt, 1 Ch, turn (12) (pic 56).

Cut the thread, pull it through the loop on the hook, hide the end in the workpiece.

You've crocheted the top of the paw.

➤ Let's look at it: for the convenience of further work, I divided the part into segments and numbered them (pic 57).

Now with a beige thread, embroider two dashes in the middle of the part in three segments: in the 3rd, 4th, and 5th. Each dash is just one stitch.

The stitches should be sewn one row away from the dividing beige stripes.

- The distance between the dashes is one stitch.
- Use a tapestry needle for embroidery.
- Sew the dashes in the 3rd and 4th segments in two threads, in the 5th segment in one thread (pics 57, 58).

The upper part of the paw is ready (pic 58).  
 Crochet the side parts of the detail with two rows of single crochet (Sc) **(as in pic 59)**.  
 Insert the hook between the rows.  
 At point M, make one Dec in each of the two rows.  
 The one big paw is ready. Repeat it eight times.



pic 59.

### ❖ Small paws (2 pcs)

- two black threads
- In two loops

**1 row.** 4 Sc in a Magic Ring, 1 Ch, turn [4] **(pic 60)**.

**2-5 rows.** 4 Sc, 1 Ch, turn [4].

**6 row.** 1 Sc, 1 Inc, 2 Sc, 1 Ch, turn [5] **(pic 61)**.

- two beige threads

➤ BLO

**7 row.** 2 SlSt, <1 Sc> 2 rows lower, 2 SlSt, 1 Ch, turn(5) **(pics 63-65)**.



pic 60.



pic 61.



pic 62.



pic 63.



pic 64.



pic 65.

➤ FLO

**8 row.** 5 SlSt, 1 Ch, turn (5) (pic 66).

➤ two black threads

➤ BLO

**9 row.** 5 Sc, 1 Ch, turn (5) (pic 67).

➤ In two loops

**10-16 rows.** 5 Sc, 1 Ch, turn [5] (pic 68).

➤ two beige threads

➤ BLO

**17 row.** 5 SlSt, 1 Ch, turn (5).

➤ FLO

**Row 18.** 5 SlSt, 1 Ch, turn (5) (pic 69).

➤ two black threads

➤ BLO

**19 row.** 1 Inc, 1 Sc, 1 Inc, 1 Sc, 1 Inc, 1 Sc, 1 Inc, 1 Ch, turn (8).

➤ In two loops

**20-25 rows.** 8 Sc, 1 Ch, turn (8) (pic 70).

Crochet the whole detail with black thread around the perimeter with two rows of single crochet (Sc) (pic 71).

Embroider the same dashes as on the large paws.

The one tiny paw is ready (pic 72). Crochet the second one.



pic 66.



pic 67.



pic 68.



pic 69.



pic 70.



pic 71.



pic 72.



## ❖ **Assembling the large paws**

For large paws, we take a wire about 12`` ( 30 cm) long, and for small ones – 7`` (18 cm) long.

Round off the ends of the wire, and make a small loop (0.8``). Wrap the loop with a slight sticky tape (**pic 73**).

Apply this loop to the narrow part of the paw and sew it with a strong thread until the first decrease.

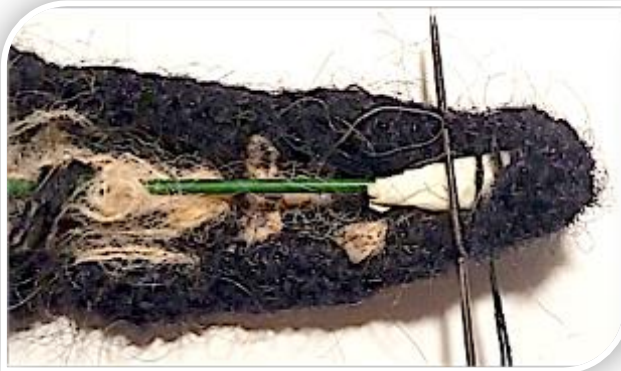
➤ **This part does not need to be stuffed (pic 74).**

Sew the edges of the part to the decreases (to the narrow part) and stuff it, giving the desired shape, gradually tightening the seam (**pic 75**).

Stuff and sew the entire paw step by step (**pics 76, 77**).



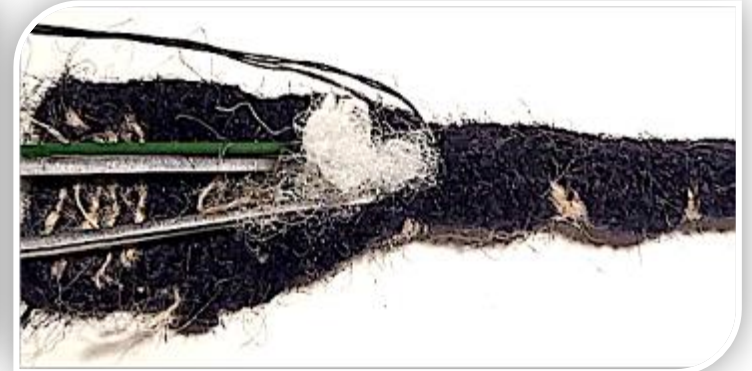
pic 73.



pic 74.



pic 75.

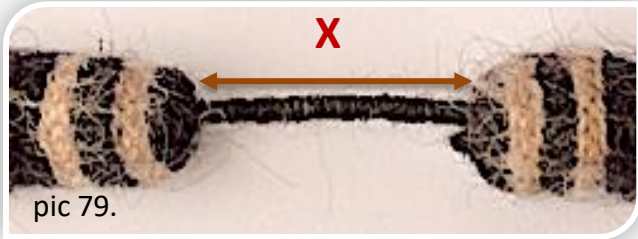
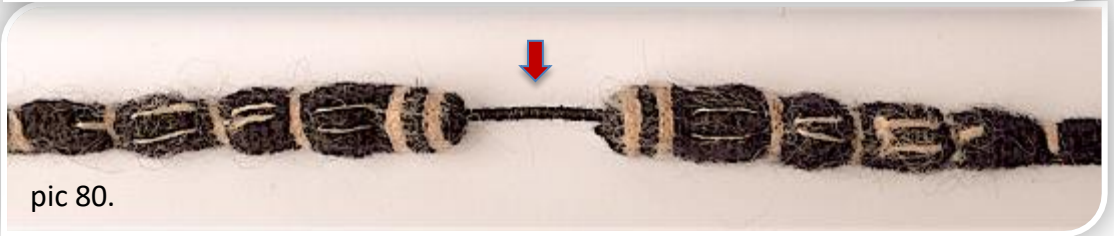


pic 76.



pic 77.

- Do the same at the other end of the wire (**pic 78**).
- Wrap the wire section between the paws tightly with black thread (**pics 79, 80**).



➤ Note: finished parts may vary slightly in size; therefore, it is difficult to determine the exact length of the wire frame.

You can solve this issue with the length of the wire as follows:

Cut the wire with an excess length.

First, do one paw completely. This will give you an idea of how long it turned out.

\* My spider has long paws – 4'' (10 cm) (**pic 81**).

Measure your chest width to determine how long you need to leave the area between the paws.

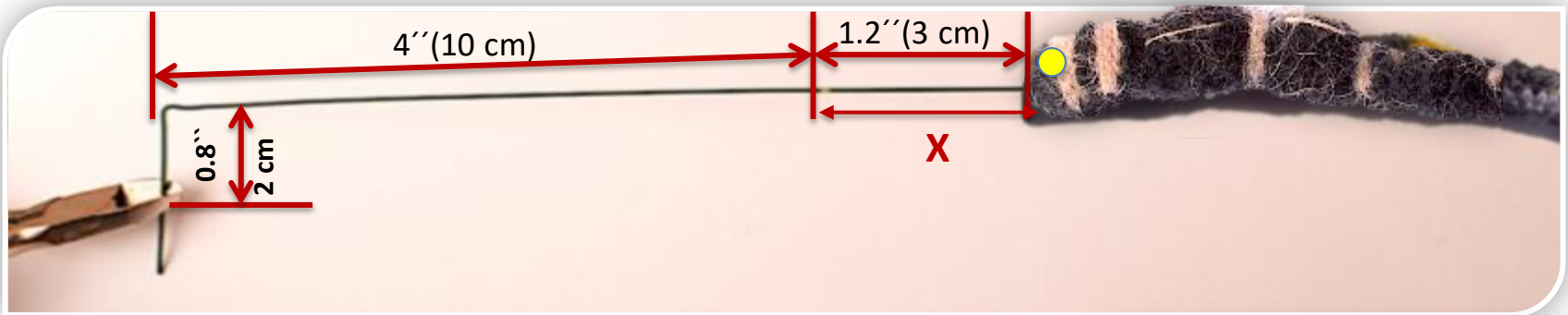
\* My spider has chest width- 1.4'' (3.5 cm) (**pic 82**).



**Y**  
4'' (10 cm)

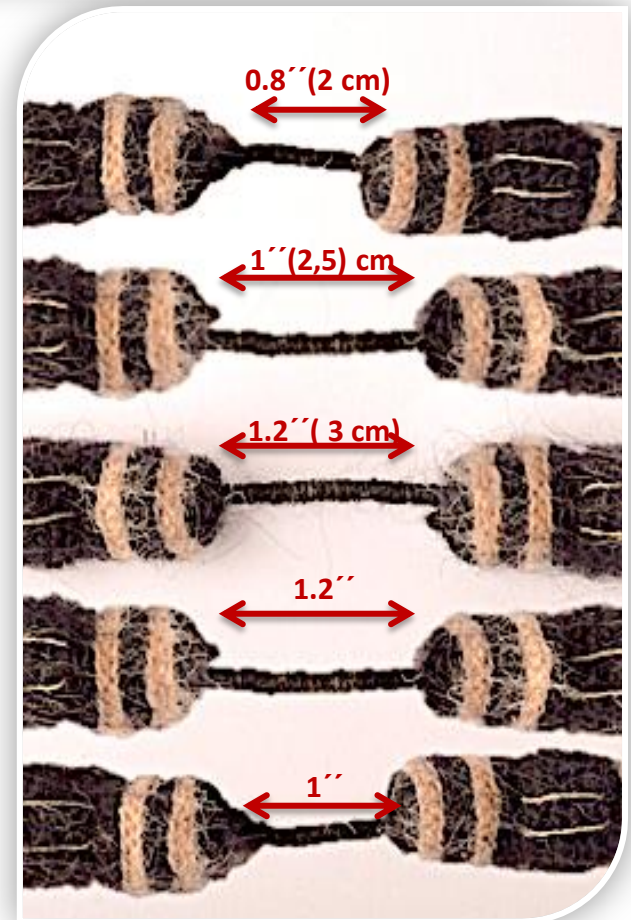


pic 82.

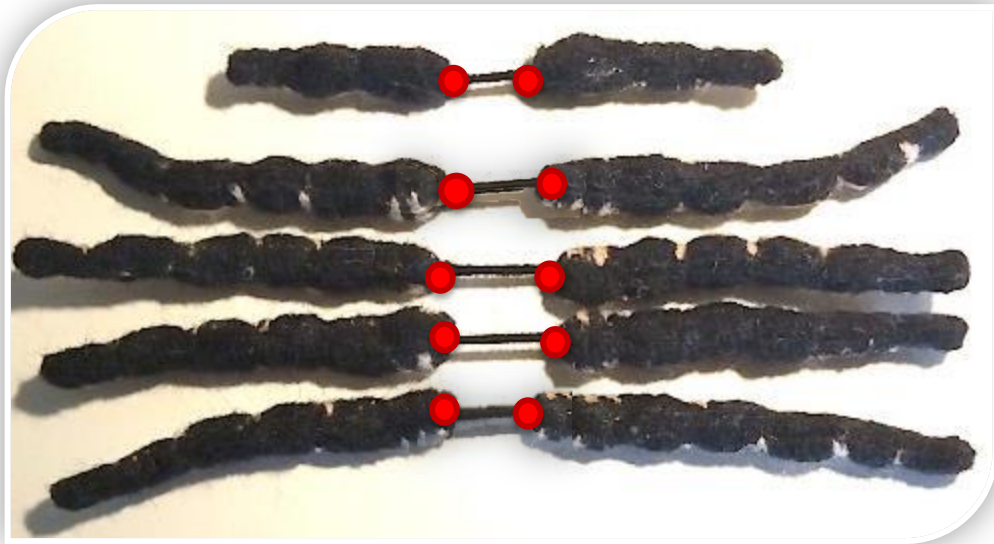


pic 83.

- It should be so that the paws are extended under the spider's chest, and the connection part X between them shouldn't be visible. For this, make it 0.5 cm less than the width of the chest. In my example  $X = 1,4'' - 0,2'' = 1.2''$ .
- Then, from the yellow point on the finished foot, measure the desired length of wire  $L = X + Y + \text{the loop at the end}$  (in my case:  $1.2'' + 4'' + 0.8'' = 6''$  (15 cm)).
- Cut off the excess wire (pic 83).
- Please note that not all pairs have the exact distance between the paws. This is because the spider's chest narrows closer to the abdomen. Also, the distance between the tiny paws is less (pic 84).
- Sew on the second paw in the same way as the first.
- Assemble the tiny paws in the same way.



pic 84.



pic 85.

- Sew the paws to the central part of the spider from the side of the chest with thin threads (pics 85,86).
- After completing the work with the paws, carefully comb the spider with a metal brush (pic 87).
- The beautiful fleecy surface will decorate your Spider.



pic 86.



pic 87.

## ❖ Eyes

- My spider has four eyes of the same size. In nature, there are up to eight different sizes.
- For the eyes, I used diam 0.2" (4 mm) beads.
- You may have other options. You can use buttons or special eyes for toys.
- Pierce the "head" with a needle and strap it up slightly with a thin, strong thread (**pics 88, 89**).
- Form a tight knobble, and attach the eyes to it (**pic 90**).
- The "head" should rise slightly above the back.



pic 88.



pic 89.

## ❖ Final treatments:

### 1. Fluff pattern

On the back of the spider, to make it look more natural, you need to comb the fluff to the center and lightly fix it with a felting needle, imitating the pattern on the back of a spider in nature (**pics 91, 92**).

### 2. Toning

Light toning will also add realism to your creation.

For toning, you can use pastel pencils or permanent art markers.

When choosing a tool for toning, it should be noted that permanent markers will allow you to clean the spider with water, and with pastel pencils, only dry cleaning is possible.

- ✓ Draw the area around the eyes with a black marker - the eyes will become more expressive (**pic 93**).
- ✓ You can also use the marker to mask off extra light hairs.



pic 90.



pic 91.



pic 92.



pic 93.

## Abdomen

- Crochet in Rounds in the two loops.
- two beige threads.

Crochet a chain of 14 Ch, join it into a ring (pic 5).

**1 rd.** 14 Sc, in each loop of the chain [14] (pic 6).

- 1 black thread, 1 beige.

**2 rd.** (1 Sc, 1 Inc) \*7 [21] (pic 7).

- 1 black thread, 1 gray .

**3 rd.** (2 Sc, 1 Inc) \*7 [28] (pic 8).

**4 rd.** (3 Sc, 1 Inc) \*7 [35].

- 2 black threads.

**5 rd.** (4 Sc, 1 Inc) \*7 [42].

**6 rd.** (5 Sc, 1 Inc) \*7 [49] (pic 9).

**7 rd.** (6 Sc 1 Inc) \*7 [56].

**8-17 rds.** 56 Sc [56] (pic 10).

**18 rd.** (6 Sc, 1 Dec) \*7 [49].

**19 rd.** (5 Sc, 1 Dec) \*7 [42].

**20 rd.** (4 Sc, 1 Dec) \*7 [35].

**21 rd.** (3 Sc, 1 Dec) \*7 [28].

**22 rd.** 28 Sc [28].

**23 rd.** (2 Sc, 1 Dec) \*7 [21].

**24 rd.** 21 Sc [21].

- one black thread, one gray .

**25 rd.** (1 Sc, 1 Dec) \*7 [14].

**26 rd.** 14 Sc [14] (pic 11).

- one black thread, one beige.

**27 rd.** (1 Sc, 1 Dec) \*4, 2 Sc [10] (pic 12).

**28 rd.** 5 Dec [5] (pic 13).

- Crochet, all the remaining loops together, cut the thread, thread it through the loop on the hook, tighten it, and hide it in the workpiece.
- Stuff the detail with fiberfill through the hole (pic 14).

## Head & Chest

The spider's «head & chest» (**pic 15**) is the main detail to which all the others are sewn. It has a rounded, slightly flattened shape. The upper part of the detail is the «head,» and you will attach the eyes right there ( **dotted line, pic 15**). The lower part of the detail is the «chest,» and you will attach the paws to that part.

The work rules:

- Crochet with single crochet (Sc); the hook is inserted in two loops.
- Crochet the central part of the detail, except for the "head" in Rounds (without SlSt and Ch).
- Use a marker to mark the beginning of the round.
- The round must be ended before the loop with the marker.
- Once you've finished the round, move the marker to the loop on the hook.
- Start crocheting from the "back" of the spider.

➤ two black threads.

**1 rd.** 13 Sc in a Magic Ring [13] (**pic 16**).

**2 rd.** (1 Sc, 1 Inc) \*6, 1 Sc [19].

**3 rd.** (2 Sc, 1 Inc) \*6, 1 Sc [25].

**4 rd.** (2 Sc, 1 Inc) \*8, 1 Sc [33].

**5 rd.** (2 Sc, 1 Inc) \*11 [44] (**pic 17**).

**6 rd.** (2 Sc, 1 Inc) \*14, 2 Sc [58].

It turned out to be a circle back (**pic 18**). Now, let`s crochet a „ head."

➤ Crochet the "head" in Rows.

Leave the marker indicating the beginning of the row in its place (**M1 in pic 19**).

**1 row.** 1 Ch, 1 Sc, 1 Dec, 4 Sc, 1 Dec, 1 Sc, turn [8].

After crocheting the 1st row, hang another marker (**M2 in pic 21**)

**2 row.** 1 Ch, 1 Sc, 1 Dec, 2 Sc, 1 Dec, 1 Sc, turn [6].

**3 row.** 1 Ch, 1 Sc, 2 Dec, 1 Sc [4].

You've got a „bulge“ (**pic 19**) - it will be the "head" of the spider, the place where the eyes will be located. The boundaries of this part are marked with markers **M1** and **M2**.

Then crochet the whole piece in a Round.

➤ Use a combination of threads: one black thread, one gray thread.

➤ The red arrow shows the direction of crocheting.

Point **A** is the point where we stopped; from this point, we shall crochet further:

1. 1 Ch, 3 Sc along the lateral side of the „bulge“ (**from point A to marker M2**)

2. Next, crochet 48 Sc in a circle up to marker **M1** (there should be 48 Sc between markers).

➤ For every eighth stitch, crochet two rounds lower (except for the 48th).

3. 3 Sc from the lateral side of the „bulge“ (between the M1 marker and point B).

4. 1 Ch, 4 Sc, 1 SlSt along the upper part of the „bulge“ (**segment A-B**).

Cut the thread, pull the end through the loop on the hook, and hide it in the workpiece. If you do everything right, there are 58 Sc in the circle (**pic 20**).

You've crocheted the upper part of the «head & chest» detail (**pic 21**), now crochet the lower one.

Start to crochet the lower part from point **C** (**pic 19**).

➤ one black thread, one beige

**1,2 rds.** 58 Sc [58] (**pic 22**).

➤ two black threads

**3,4 rds.** 58 Sc [58] (**pic 23**).

➤ Hold the detail so that the front side is outside, then the part does not have to be turned out.

**5-8 rds** (2 Sc, 1 Dec), repeat until the end of the 8th rd [17].

➤ After row 7, stuff the detail with fiberfill, starting from the „offshoot“; try to fill it tightly, giving the desired shape, making it easier to attach the eyes.

**9 rd.** (1 Sc, 1 Dec) [13].

**10 rd.** (1 Sc, 1 Dec) [9] (**pic 25**).

Get the remaining loops on a thread, cut it, then tighten and fasten the thread and hide the end into the workpiece.

The detail «head & chest» is ready.



## Jaw

- two gray threads

**1 rd.** 5 Sc in a Magic Ring [5] **(pic 26)**.

**2 rd.** 5 Inc [10] **(pic 27)**.

- one gray threads , one black

**3,4 rds.** 10 Sc [10] **(pic 28)**.

- one black threads ,one beige

**5,6 rds.** 10 Sc [10] **(pic 29)**.

- two black threads

**7 rd.** 10 Sc **(pic 30)**.

Cut the thread and fasten it.

- two beige threads

Join 2 parts together **(pic 31)**, and crochet the last round simultaneously.

**8 rd.** ( 3 Sc, 1 Inc ) \*5 [25] **(pic 32)**.

Cut the thread, and pull it through the loop on the hook. Hide the end into the workpiece.

Stuff the spider's jaw with a fiberfill and sew to the center of the spider with thin threads **(pic 33)**.

Attach the abdomen on the opposite side of the detail **(pic 34)**.

## Paws

The spider has 5 pairs of paws, fore big and one small.

➤ Crochet all paws in Rows , from two colors of yarn.

### ❖ Big paw ( 4 pcs)

➤ two black threads

➤ In two loops

**1 row.** 4 Sc in a Magic Ring, 1 Ch, turn [4] (pic 35).

**2-6 rows.** 4 Sc, 1 Ch, turn [4] (pic 36).

➤ two beige threads

➤ BLO

**7 row.** 4 SISt, 1 Ch, turn [4] (pics 37, 38).

➤ FLO

**8 row.** 4 SISt, 1 Ch, turn [4] (pics 39, 40).

➤ two black threads

➤ BLO

**9 row.** 4 Sc, 1 Ch, turn [4] (pics 41, 42).

➤ In two loops

**10 row.** 2 Sc, 1 Inc, 1 Sc, 1 Ch, turn [5].

**11-16 rows.** 5 Sc, 1 Ch, turn [5] (pic 43).

➤ two beige threads.

➤ BLO.

**17 row.** 2 SISt, <1 SISt> crochet 2 rows lower, 2 SISt, 1 Ch, turn [5] (pics 44-47).

➤ FLO

**18 row.** 5 SISt, 1 Ch, turn [5] (pic 48).

➤ two black threads.

➤ BLO.

**19 row.** 1 Sc, 2 Inc, 2 Sc, 1 Ch, turn [7].

➤ In two loops.

**20-26 rows.** 7 Sc, 1 Ch, turn [7] (pic 49).

➤ two beige threads,

➤ BLO

**27 row.** 7 SISt, 1 Ch, turn [5].

➤ FLO

**28 row.** 7 SISt, 1 Ch, turn [8] (pic 50).

➤ two black threads

➤ BLO

**29 row.** 3 Sc, 1 Inc, 3 Sc, 1 Ch, turn [8].

➤ In two loops

**30-34 rows.** 8 Sc, 1 Ch, turn [8] (pic 51).

two beige threads

➤ BLO

**35 row.** 8 SlSt, 1 Ch, turn [8].

➤ FLO

**36 row.** 8 SlSt, 1 Ch, turn [8] (pic 52).

➤ two black threads

➤ BLO

**37 row.** 4 Sc, 1 Inc, 3 Sc, 1 Ch, turn [9].

➤ In two loops

**38 - 42 rows.** 9 Sc, 1 Ch, turn [9].

**43 row.** 1 Sc, 1 Dec, 3 Sc, 1 Dec, 1 Sc, 1 Ch, turn [7].

**44 row.** 1 Sc, 5 Inc, 1 Sc, 1 Ch, turn [12] (pic 53).

➤ two beige threads

➤ BLO

**45 row.** 12 SlSt, 1 Ch, turn [12].

➤ FLO

**46 row.** 12 SlSt, 1 Ch, turn [12] (pic 54).

➤ two black threads

➤ BLO

**47 row.** 12 SlSt, 1 Ch, turn [12].

➤ FLO

**48 row.** 12 SlSt, 1 Ch, turn [12] (pic 55).

➤ two beige threads

➤ BLO

**49 row.** 12 SlSt, 1 Ch, turn [12].

➤ FLO

**50 row.** 12 SlSt, 1 Ch, turn [12].

➤ two black threads

➤ BLO

**51 row.** 12 SlSt, 1 Ch, turn [12].

➤ FLO

**52 row.** 12 SlSt, 1 Ch, turn (12) (pic 56).

Cut the thread, pull it through the loop on the hook, hide the end in the workpiece.

You've crocheted the top of the paw.

➤ Let's look at it: for the convenience of further work, I divided the part into segments and numbered them (pic 57).

Now with a beige thread, embroider two dashes in the middle of the part in three segments: in the 3rd, 4th, and 5th. Each dash is just one stitch.

The stitches should be sewn one row away from the dividing beige stripes.

- The distance between the dashes is one stitch.
- Use a tapestry needle for embroidery.
- Sew the dashes in the 3rd and 4th segments in two threads, in the 5th segment in one thread (pics 57, 58).

The upper part of the paw is ready (**pic 58**).

Crochet the side parts of the detail with two rows of single crochet (Sc) (**as in pic 59**).

Insert the hook between the rows.

At point M, make one Dec in each of the two rows. The one big paw is ready. Repeat it eight times.

### ❖ **Small paws (2 pcs)**

➤ two black threads

➤ In two loops

**1 row.** 4 Sc in a Magic Ring, 1 Ch, turn [4] (**pic 60**).

**2-5 rows.** 4 Sc, 1 Ch, turn [4].

**6 row.** 1 Sc, 1 Inc, 2 Sc, 1 Ch, turn [5] (**pic 61**).

➤ two beige threads

➤ BLO

**7 row.** 2 SlSt, <1 Sc> 2 rows lower, 2 SlSt, 1 Ch, turn(5) (**pics 63-65**).

➤ FLO

**8 row.** 5 SlSt, 1 Ch, turn (5) (**pic 66**).

➤ two black threads

➤ BLO

**9 row.** 5 Sc, 1 Ch, turn (5) (**pic 67**).

➤ In two loops

**10-16 rows.** 5 Sc, 1 Ch, turn [5] (**pic 68**).

➤ two beige threads

➤ BLO

**17 row.** 5 SlSt, 1 Ch,  
turn (5).

➤ FLO

**Row 18.** 5 SlSt, 1 Ch,  
turn (5) (**pic 69**).

➤ two black threads

➤ BLO

**19 row.** 1 Inc, 1 Sc, 1 Inc, 1 Sc, 1 Inc, 1 Ch, turn (8).

➤ In two loops

**20-25 rows.** 8 Sc, 1 Ch, turn (8) (**pic 70**).

Crochet the whole detail with black thread around the perimeter with two rows of single crochet (Sc) (**pic 71**).

Embroider the same dashes as on the large paws. The one tiny paw is ready (**pic 72**). Crochet the second one.

## ❖ **Assembling the large paws**

For large paws, we take a wire about 12'' (30 cm) long, and for small ones – 7'' (18 cm) long.

Round off the ends of the wire, and make a small loop (0.8''). Wrap the loop with a slight sticky tape **(pic 73)**.

Apply this loop to the narrow part of the paw and sew it with a strong thread until the first decrease.

➤ **This part does not need to be stuffed (pic 74).**

Sew the edges of the part to the decreases (to the narrow part) and stuff it, giving the desired shape, gradually tightening the seam **(pic 75)**.

Stuff and sew the entire paw step by step **(pics 76, 77)**.

- Do the same at the other end of the wire **(pic 78)**.
- Wrap the wire section between the paws tightly with black thread **(pics 79, 80)**.

➤ **Note: finished parts may vary slightly in size; therefore, it is difficult to determine the exact length of the wire frame.**

You can solve this issue with the length of the wire as follows:

Cut the wire with an excess length.

First, do one paw completely. This will give you an idea of how long it turned out.

\* My spider has long paws – 4'' (10 cm) **(pic 81)**.

Measure your chest width to determine how long you need to leave the area between the paws.

\* My spider has chest width- 1.4'' (3.5 cm) **(pic 82)**.

- It should be so that the paws are extended under the spider's chest, and the connection part X between them shouldn't be visible. For this, make it 0.5 cm less than the width of the chest. In my example  $X = 1,4'' - 0,2'' = 1,2''$ .
- Then, from the yellow point on the finished foot, measure the desired length of wire  **$L = X + Y + \text{the loop at the end}$**  (in my case:  $1.2'' + 4'' + 0.8'' = 6''$  (15 cm)).
- Cut off the excess wire **(pic 83)**.
- Please note that not all pairs have the exact distance between the paws. This is because the spider's chest narrows closer to the abdomen. Also, the distance between the tiny paws is less **(pic 84)**.
- Sew on the second paw in the same way as the first.
- Assemble the tiny paws in the same way.
  
- Sew the paws to the central part of the spider from the side of the chest with thin threads **(pics 85,86)**.
- After completing the work with the paws, carefully comb the spider with a metal brush **(pic 87)**.
- The beautiful fleecy surface will decorate your Spider.

## ❖ Eyes

- My spider has four eyes of the same size. In nature, there are up to eight different sizes.
- For the eyes, I used diam 0.2` (4 mm) beads.
- You may have other options. You can use buttons or special eyes for toys.
- Pierce the "head" with a needle and strap it up slightly with a thin, strong thread (**pics 88, 89**).
- Form a tight knobble, and attach the eyes to it (**pic 90**).
- The "head" should rise slightly above the back.

## ❖ Final treatments:

### 1. Fluff pattern

On the back of the spider, to make it look more natural, you need to comb the fluff to the center and lightly fix it with a felting needle, imitating the pattern on the back of a spider in nature (**pics 91, 92**).

### 2. Toning

Light toning will also add realism to your creation.

For toning, you can use pastel pencils or permanent art markers.

When choosing a tool for toning, it should be noted that permanent markers will allow you to clean the spider with water, and with pastel pencils, only dry cleaning is possible.

- ✓ Draw the area around the eyes with a black marker - the eyes will become more expressive (**pic 93**).
- ✓ You can also use the marker to mask off extra light hairs.

**Excellent job, your Tarantula is ready.**



If you want to leave a review, I will be very grateful.  
If you have any questions or comments, write to me through my e-mail.  
I promise not to leave them unattended.