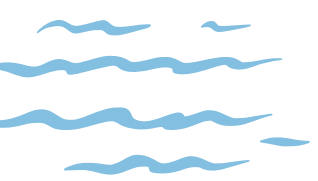
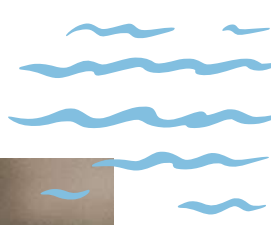
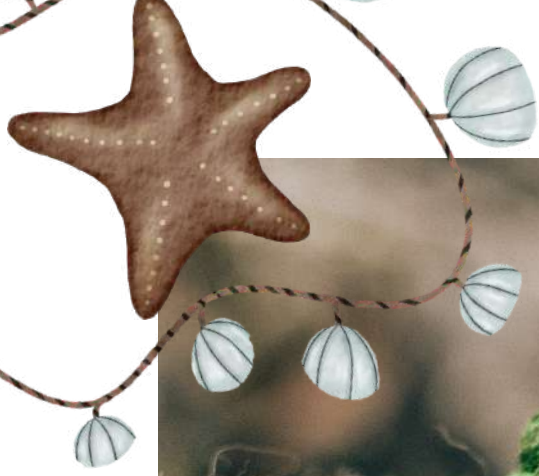
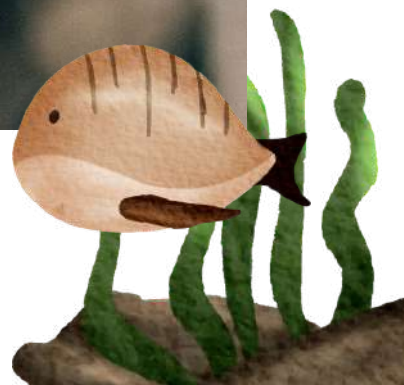


TURTLE



crochet toy pattern



MATERIALS

Yarn:

YarnArt Jeans (160 m/50 g)

- color 87 (beige) for lower part of shell
- color 69 (green) for head and legs
- color 40 (brown) for upper part of shell
- color 82 (dark green) for spots
- color 03 (cream) for details



OTHER MATERIALS

- Crochet hook 2 mm (US B) and 3 mm (US D)
- Soft toy filling
- 8-9 mm safety eyes
- Needle, stitch marker, scissors, pins
- Brown felt pen (for freckles)

These materials are only a list of my recommendations to help you create the toy like mine. You can use any type/size of the yarn and hook, but remember "A larger hook will give you a bigger doll".

ABBREVIATIONS

mr - magic ring

sc - single crochet

DC - double crochet

HDC - half double crochet

inc - increase

dec - decrease

rnd/rnds - round/rounds

st, sts - stitch, stitches

ch - chain

sl st - slip stitch

(..) - total number of stitches in round

(..) x n - repeat the instruction in parenthesis *n* times

BLO - back loop only

FLO - front loop only

bo - bobble stitch (crochet 4 DC together in the same stitch)

PATTERN TERMINOLOGY (US TERMS)

NOTES

- *Using this pattern you will crochet a cute turtle.*
- *The toy pieces are crocheted in continuous non-joining rounds (unless otherwise stated).*
- *This pattern doesn't include any crochet lessons. You must know how to crochet main stitches.*
- *Skill level - intermediate.*
- *The size of the finished toy when using the indicated materials is about 20 cm (7,87 inch).*
- *My stitches have a semi X-shape. If your stitches have V-shape, then your toy will be bigger.*
- *The legs are attached when crocheting the upper part of the shell.*



Head

(in green color, use a 2 mm crochet hook)

Rnd 1. 6 sc in mr (6)

Rnd 2. (inc) x 6 (12)

Rnd 3. (1 sc, inc) x 6 (18)

Rnd 4. (2 sc, inc) x 6 (24)

Rnd 5. (3 sc, inc) x 6 (30)

Rnd 6. (4 sc, inc) x 6 (36)

Rnd 7. (5 sc, inc) x 6 (42)

Rnd 8. (6 sc, inc) x 6 (48)

Rnd 9. (7 sc, inc) x 6 (54)

Rnd 10-11. 54 sc (54) 2 rounds

Rnd 12. (8 sc, inc) x 6 (60)

Rnd 13-20. 60 sc (60) 8 rounds

Rnd 21. 10 sc, (inc) x 3, 7 sc, (inc) x 3, 37 sc (66)

Rnd 22-23. 66 sc (66) 2 rounds

Rnd 24. (9 sc, dec) x 6 (60)

Rnd 25. (8 sc, dec) x 6 (54)

Rnd 26. (7 sc, dec) x 6 (48)

Rnd 27. (6 sc, dec) x 6 (42)

Place the eyes between rnds 19/20, with a distance of 8 sts between the eyes. Insert the first eye over the second increase of rnd 21, insert the second eye over the fifth increase of rnd 21.

Pic. 1-3

Rnd 28. (5 sc, dec) x 6 (36)

Start to stuff the head.

Rnd 29. (4 sc, dec) x 6 (30)

Rnd 30. (3 sc, dec) x 6 (24)

Rnd 31. (2 sc, dec) x 6 (18)

Stuff the head from rnd 29 to rnd 31 not tightly.

Rnd 32. (1 sc, dec) x 6 (12) Pic. 4



Cut the thread leaving a long tail. After all the head details are made, we'll close the opening on the head using this thread tail. Pic. 5



Big spots

(use a 2 mm crochet hook, make 3, in dark green color)

Rnd 1 7 HDC in mr (7)

Join the beginning and the end of rnd with sl st.

Cut the thread leaving a long tail. Pic. 6



Small spots

(use a 2 mm crochet hook, make 4, in dark green color)

Rnd 1 7 sc in mr (7)

Join the beginning and the end of rnd with sl st.

Cut the thread leaving a long tail. Pic. 7



Head details

The beginning and the end of all threads are located in the head opening. I tie all thread tails in knots and cut the ends after all the head details are made.



Make shaping for the eyes.

Use the thread of the green color YarnArt Jeans. Using a needle, insert the thread into the hole on the head, bring it out at point 1, insert it at point 2 and bring it out at point 3, insert it at point 4 and bring it out into the hole on the head. Tighten the ends of the threads well and fix them with a knot. Pic. 8

Embroider the eye whites with the thread of cream color. Pic. 9-11



Embroider the eyebrows above the eyes with brown thread YarnArt Jeans. Divide it into 4 thin strands and use 2 strands. Pic. 12

Draw freckles between the eyes and on the cheeks. Pic. 12



- 1 Sew a large spot between rnds 8 and 12.
 - 2 Sew a small spot between rnds 5 and 8.
 - 3 Sew a small spot between rnds 6 and 9.
- Count the rnds from the top of the head. Pic. 13



Close the opening on the head using the thread tail as follow: (dec) x 6 (6)

Pull the opening closed pulling a needle through front loops of stitches.

Weave in the thread tail. Pic. 14-15

Lower legs

(make 2, use a 2 mm crochet hook, in green color, don't stuff)

Rnd 1. 6 sc in mr (6)

Rnd 2. (1 sc, inc) x 3 (9)

Rnd 3. 9 sc (9)

Rnd 4. (2 sc, inc) x 3 (12)

Rnd 5. (3 sc, inc) x 3 (15)

Rnd 6. 15 sc (15)

Rnd 7. (4 sc, inc) x 3 (18)

Rnd 8-10. 18 sc (18) 3 rounds

Rnd 11. 6 sc, (dec) x 3, 6 sc (15)

Rnd 12. 4 sc, (dec) x 3, 5 sc (12)

Rnd 13-14. 12 sc (12) 2 rounds

Rnd 15. Fold the leg in half and work 6 sc through two layers. Cut the thread. Pic. 16



Upper legs

(make 2, use a 2 mm crochet hook, in green color, don't stuff)

Please note! Before you start crocheting the upper legs, you need to crochet the spots.

Rnd 1. 6 sc in mr (6)

Rnd 2. (1 sc, inc) x 3 (9)

Rnd 3. 9 sc (9)

Rnd 4. (2 sc, inc) x 3 (12)

Rnd 5. 12 sc (12)

Rnd 6. 3 sc, (1 sc, inc) x 3, 3 sc (15)

Rnd 7. 3 sc, (2 sc, inc) x 3, 3 sc (18)

Rnd 8. 3 sc, (3 sc, inc) x 3, 3 sc (21)

Rnd 9-10. 21 sc (21) 2 rounds

Rnd 11. 3 sc, (4 sc, inc) x 3, 3 sc (24)

Rnd 12-14. 24 sc (24) 3 rounds

Rnd 15. 6 sc, (dec) x 6, 6 sc (18)

Rnd 16. 6 sc, (dec) x 3, 6 sc (15)

Sew the spots on the legs, sew a large spot on top, and a smaller spot under it. Pay attention to the location of the spots on both legs. Pic. 17

Rnd 17. (3 sc, dec) x 3 (12)

Rnd 18-19. 12 sc (12) 2 rounds

Rnd 20. Sc, fold the leg in half and work 6 sc through two layers. Cut the thread. Pic. 18



Shell

Start crocheting from the upper part of the shell (in brown color), then crochet the lower part (in beige color). The legs are attached when crocheting the upper part of the shell.

Use the pattern on page 11 to understand the principle of crocheting of the upper part of the shell.

Please note! Before you start crocheting the shell, you need to crochet the legs.



Shell

(for the upper part use a 3 mm crochet hook, in brown color)



Rnd 1. 6 sc in mr (6)

Rnd 2. (bo, sc) x 6 (12) Pic. 19

Rnd 3. (1 sc, inc) x 6 (18)

Rnd 4. (bo, sc, in next st: bo, sc) x 6 (24) Pic. 20

Rnd 5. (3 sc, inc) x 6 (30)

Rnd 6. (bo, sc, bo, sc, in next st: bo, sc) x 6 (36)

Rnd 7. (5 sc, inc) x 6 (42)

Rnd 8. (bo, sc, bo, sc, bo, sc, in next st: bo, sc) x 6 (48)

Rnd 9. (7 sc, inc) x 6 (54)

Rnd 10. (bo, sc) x 23, ch7, skip 7 st, beginning from the 8th st crochet 1 sc (54) Pic. 21

Let's start crocheting the lower part of the shell. Use a 2 mm crochet hook.

Change to beige color. Don't cut the brown thread, leave it in front of the work

Pic. 22 Next crochet in beige color.

Rnd 11. BLO 54 sc (54) Pic. 23

Rnd 12-13. 54 sc (54) 2 rounds Pic. 24





Return to the brown thread. We are going to join the legs.
Use a crochet hook 2 mm.

Ch1, 3 sc, take the upper leg and crochet through both pieces layers 6 sc. Pay attention to the position of the leg.
Pic. 25 Next crochet 6 sc, take the lower leg and crochet through both pieces layers 6 sc, 3 sc, take the second lower leg and crochet 6 sc through both pieces layers. Pay attention to the position of the lower legs.

Pic. 27 Then crochet 6 sc, take the upper leg and crochet through both pieces layers 6 sc.

Pay attention to the position of the second upper leg. Pic. 28
3 sc, sl st. Cut the thread leaving a long tail. Pic. 29

Return to the crocheting of the lower part of the shell.

Rnd 14. (7 sc, dec) x 6 (48)

Rnd 15. (6 sc, dec) x 6 (42)

Rnd 16. (5 sc, dec) x 6 (36)

Rnd 17. (4 sc, dec) x 6 (30)

Stuff the shell.

Rnd 18. (3 sc, dec) x 6 (24)

Rnd 19. (2 sc, dec) x 6 (18)

Rnd 20. (1 sc, dec) x 6 (12)

Rnd 21. (dec) x 6 (6)

Cut the thread leaving a long tail. Using this thread tail pull the opening closed pulling a needle through front loops of stitches. Weave in the thread tail.

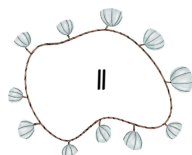
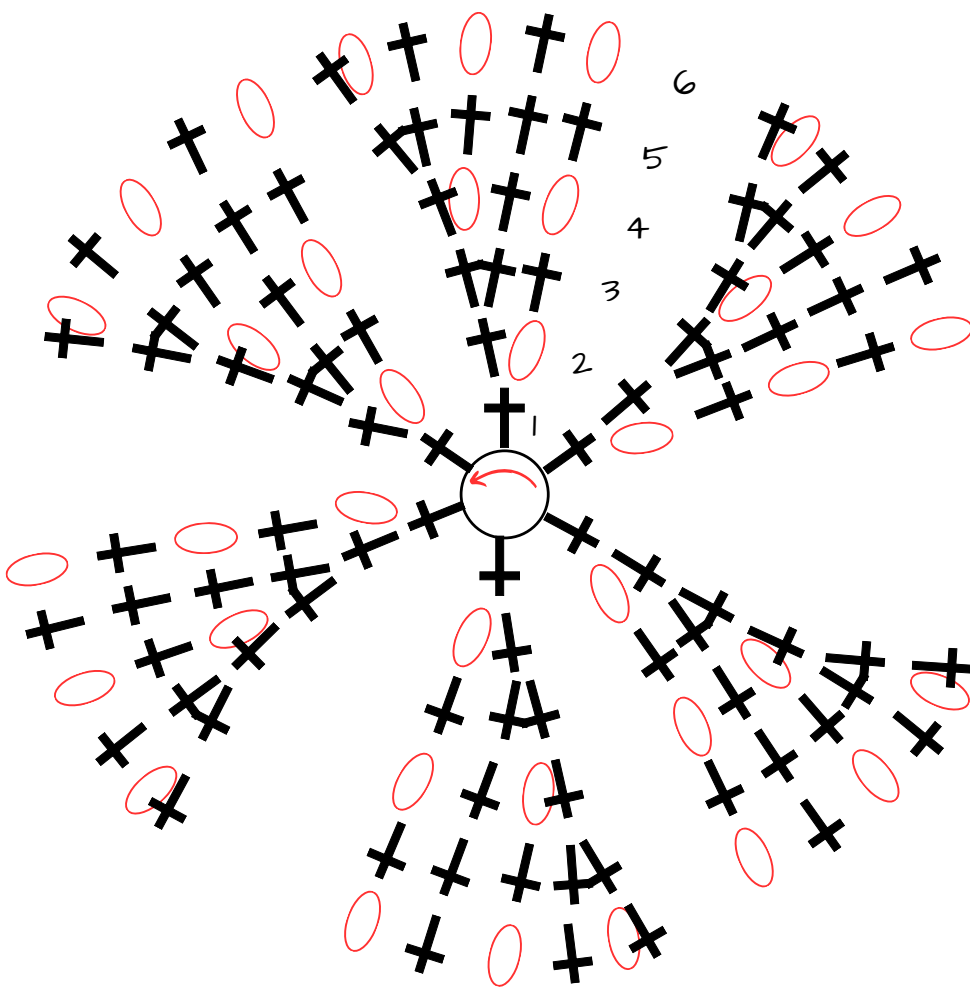
Add some stuffing through the hole on top, giving the shell a beautiful shape. Pic. 30



Pattern for the upper part of the shell

(it shows how to crochet rnds 1 - 6 (in order for you to understand the principle of crocheting))

- - mr
- ⊕ - sc
- - bo
- ↶ - direction of crocheting
- 1-6 - Rnd



Toy assembly



Sew the head to the shell having fixed it with pins. Pic. 31-33

Congratulations!



Your Turtle is now complete!
I hope you have enjoyed creating this toy
and thank you so much for choosing
my pattern!

