

Guichai pattern

Super Hero "DeadPool"



© 2018 Guichai dolls. สงวนลิขสิทธิ์.

Deadpool Pattern made & sold by Guichai Dolls.
Finished doll size 14 inches *size can vary due to yarn & hook size.

This pattern is for individual use only, it is not allowed to copy, translate, Sale, give out to any one or share the pattern in anyway after your purchase.

But you are free to do anything with the finished crochet,
give as a gift or even sale the finished crochet.

: Pattern design by Guichai dolls : www.Guichai.etsy.com

@ Guichai-dolls@hotmail.com

f www.facebook.com/GuichaiDolls

🛒 www.Guichai.etsy.com

📷 www.instagram.com/guichaidolls



: For the dolls :

Cotton Yarn / Thickness: 2.2 mm. (for example bit.ly/3dHpUmm)

: use 2 strings of yarn, doll size around 12-14 inches (From pattern)

: use 1 string of yarn (with crochet hook size 3.0-3.5 mm), doll size around 6-8 inches
(if you use 1 string of yarn, you must resize the eyes and swords)

Equipment.

- # Crochet hook size 5.0 mm.
- # Polyester.
- # Sewing equipment.
- # felt : white, brown, black, red and gray color.
- # Super fine yarn (4Ply) Red 300g, Black 60g.
- # UHU glue, wire 2 mm (number 20.).
- # Pants hooks and eyes 2 pieces.



Use 2 strings.



Symbols used

For different languages Basic Crochet Conversion **US, UK, DE, DK, NL, IT, FR, ES, RU.**

Hope you can understand it easier.

>> <http://bit.ly/2potNfR> <<

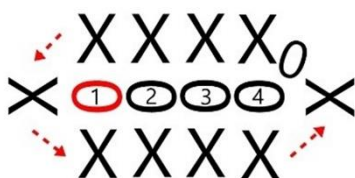
Clip how to basic crochet symbols X A V T F etc.

<https://youtu.be/jd87Czw6G6g>



How to crochet around chains foundation.

- 1.begin chains by the specified number for foundation.
- 2.1ch, and crochet stitch around chains foundation to a circle.



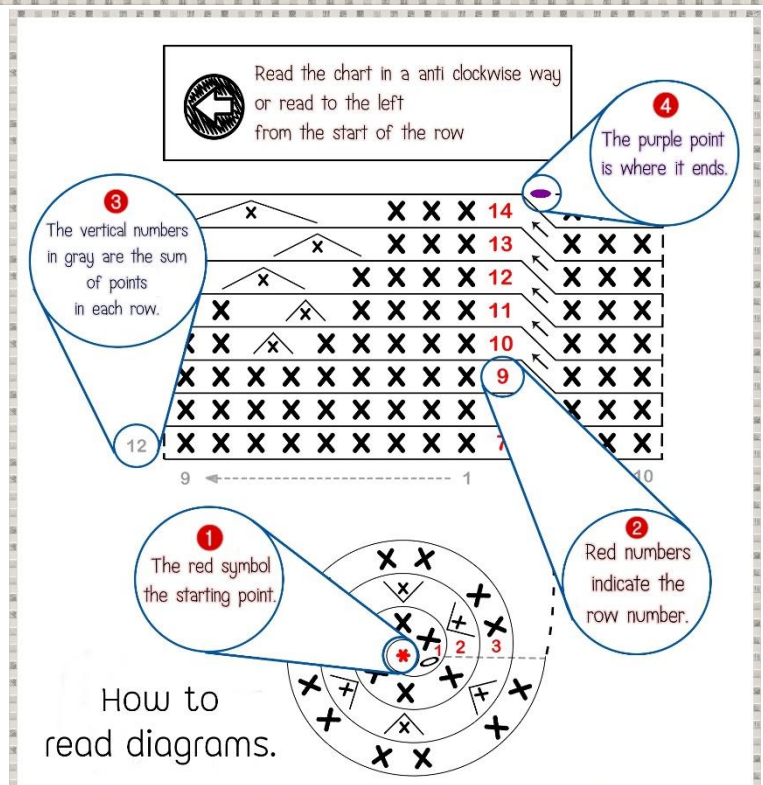
***** Abbreviations us terms *****

ch	=	chain
slst	=	slip stitch
sc	=	single crochet
hdc	=	half double crochet
dc	=	double crochet
tr	=	treble crochet
inc	=	single crochet increase
dec	=	single crochet decrease
dc-inc	=	double crochet increase
dc-dec	=	double crochet decrease
[.....]*...times	=	repeat instructions in brackets ... times
rnds	=	round(s)
st.	=	stitch(es)
FLO	=	crochet in the front loop only
BLO	=	crochet in the back loop only
FLO-F	=	double crochet in the front loop
BLO-X	=	single crochet in the back loop
BLO-[...]	=	do instructions in brackets in the back loop.
pc	=	Popcorn stitch

W = 3 single crochet in next stitch.

***** Expand the symbols *****

sc 2.	=	2 single crochet.
sc, inc.	=	1 single crochet, 1 increase.
sc 3, dec.	=	3 single crochet, 1 decrease.
sc 2, dec 2.	=	2 single crochet, 2 decrease.
[sc 2, inc]*6 times.	=	[2 single crochet, 1 increase] repeat 6 times.
BLO-sc 30.	=	30 single crochet in the back loop only.
BLO-[sc 2, inc, sc, inc].	=	[2 single crochet, 1 increase, 1 single crochet, 1 increase] in the back loop only.
sc 30, slst.	=	30 single crochet, slip stitch in next stitch.

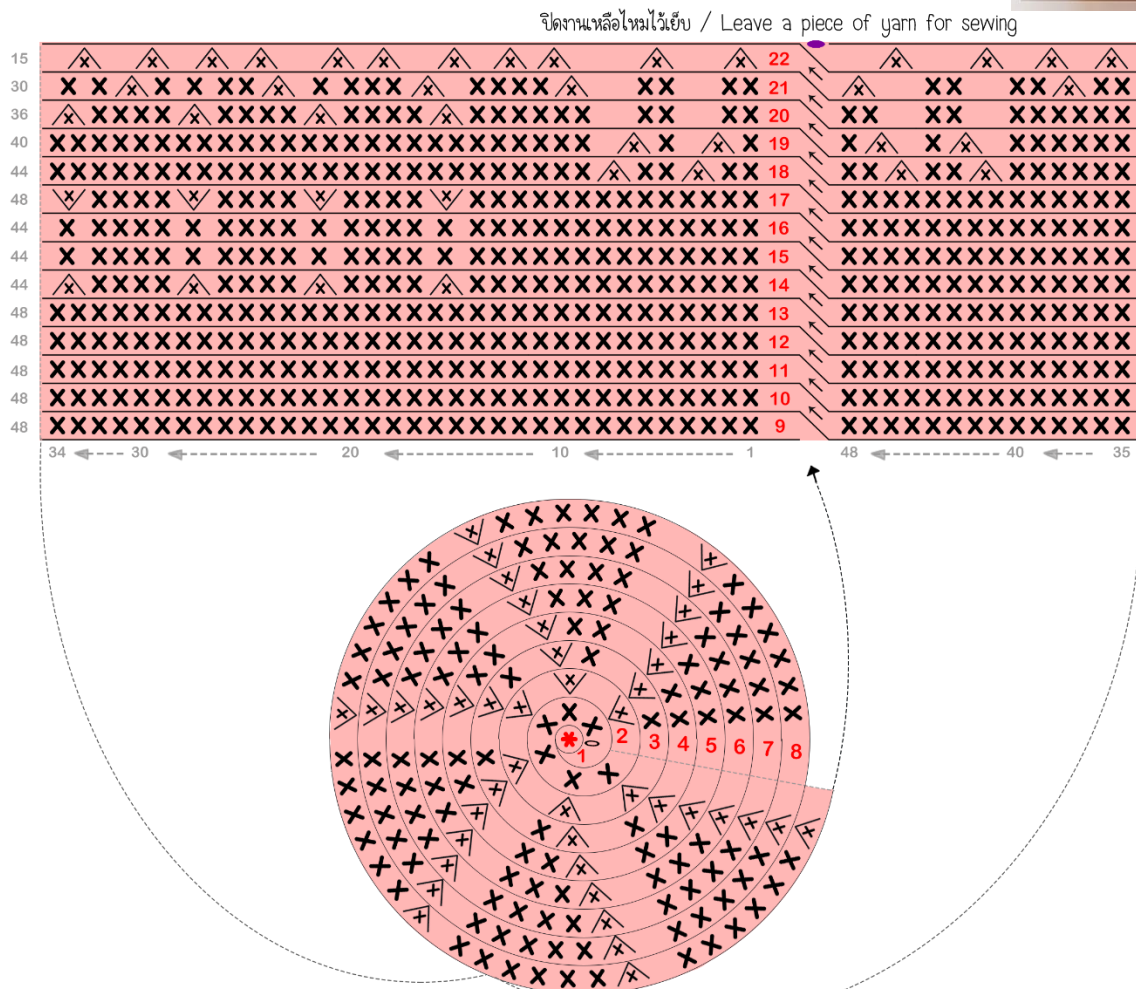


Row	Code	St.
1	sc 6. (magic ring)	6
2	inc 6.	12
3	[sc, inc]*6 times.	18
4	[sc 2, inc]*6 times.	24
5	[sc 3, inc]*6 times.	30
6	[sc 4, inc]*6 times.	36
7	[sc 5, inc]*6 times.	42
8	[sc 6, inc]*6 times.	48
9-13	sc 48.	48
14	sc 14, [dec,sc 4]*4 times, sc 10.	44
15-16	sc 44.	44
17	sc 14, [inc, sc 4]*4 times, sc 10.	48

Row	Code	St.
18	[sc 2, dec]*2 times, sc 32, [dec, sc 2]*2 times.	44
19	[sc, dec]*2 times, sc 32, [dec, sc]*2 times.	40
-begin fill with polyester-		
20	sc 10, [dec, sc 4]*4 times, sc 6.	36
21	[sc 4, dec]*6 times.	30
22	dec 15. <i>slst.</i>	15
Leave a piece of yarn for sewing Fill with polyester until full.		

Head

Use 4 ply red colored 2 strings,
hook size 5.0 mm, make 1 piece.

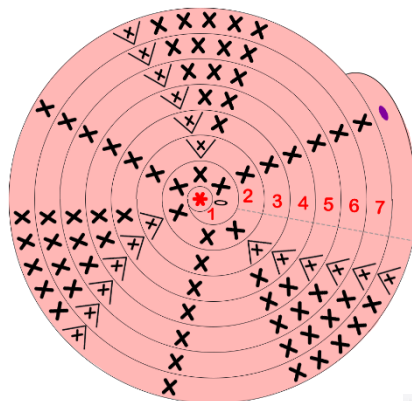


Topknot

Use 4 ply red colored 2 strings, hook size 5.0 mm, make 1 piece.



Row	Code	St.
1	sc 6. (magic ring)	6
2	[sc, inc]*3 times.	9
3	[sc 2, inc]*3 times.	12
4	[sc 3, inc]*3 times.	15
5	[sc 4, inc]*3 times.	18
6	[sc 5, inc]*3 times.	21
7	[sc 6, inc]*3 times. slst.	24
Leave a piece of yarn for sewing No need to fill polyester.		



Row	Code	St.
1	sc 5. (magic ring)	5
2	inc 5.	10
3	[sc, inc]*5 times.	15
Divide crochet into 2 parts.		
4	sc 4, ch 4, skip 7st., sc 4.	12
5-6	sc 12.	12
Pause and connect yarn as shown in diagram. "Red arrow"		
4-6	sc 11.	11
Close stitch, Leave a piece of yarn for sewing. Sew at * for it to connect as shown in diagram.		
7	sc 15.	15
8	sc 2, dec 6, sc.	9
9-10	sc 9.	9
11	sc 2, [inc, sc]*3 times, sc.	12
12-16	sc 12.	12
17	sc 5, [dec, sc]*2 times, sc.	10
18	sc 5, [inc, sc]*2 times, sc.	12
19-20	sc 12.	12
Black code-use black yarn // Red code-use red yarn		
21-22	sc 4, sc 7, sc.	12
23-26	sc 12.	12
27	[sc 2, dec]*3 times, slst.	9
Leave a piece of yarn for sewing. do not fill polyester yet		

<https://youtube.com/RqurMwupvKE>

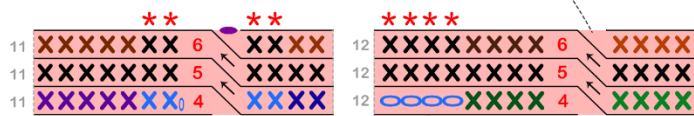
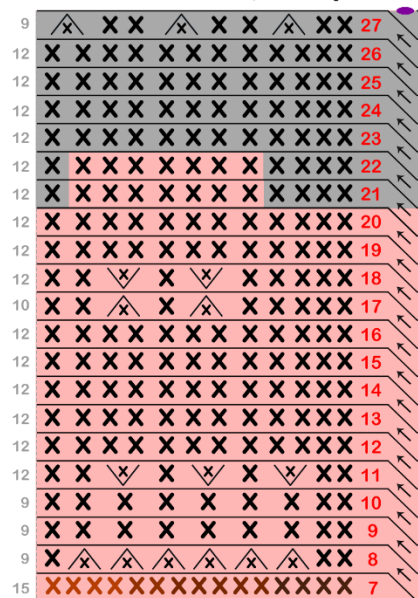
Video clip arm row 4-8.:

Arms

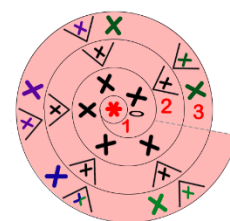
Use 4 ply red/black colored 2 strings, hook size 5.0 mm, make 2 pieces.



ปิดงานเหลือไหมไว้เย็บ / Leave a piece of yarn for sewing



See how to
crochet arms
on page 5.



How to crochet arms.

Video clip arm row 4-8. :
<https://youtu.be/RgwRMwvvpvKE>



Crochet to row 3.



4sc, 4chains.



Leave out 7 stitch, then
crochet 4sc.



The upper view should
look like this.



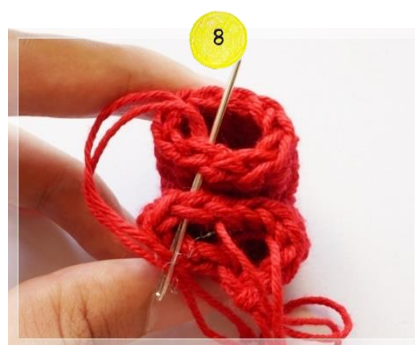
Crochet one side until
row 6 and pause.



Connect yarn with 2nd chain
from the 4 chains in pic 2.



Crochet until row 6. Close stitch
and leave yarn for sewing.



Sew 4 stitches together on the
position of ✖ in the diagram.



Fill polyester as shown in
picture.



Crochet until done but do
not add more polyester.



The view from the side.



You will be able to put the
sword there.

Body

Use 4 ply red/black colored 2 strings, hook size 5.0 mm, make 1 piece.



*row 26 crochet to connect the legs, begin from brown code to green code. Look up position in diagram.

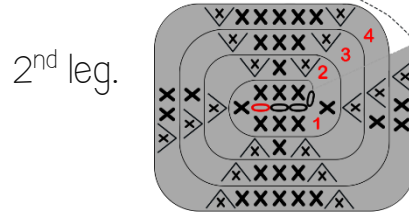
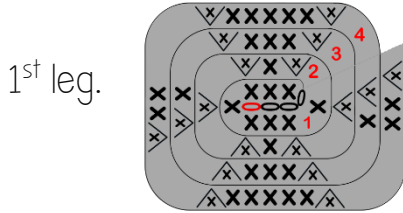
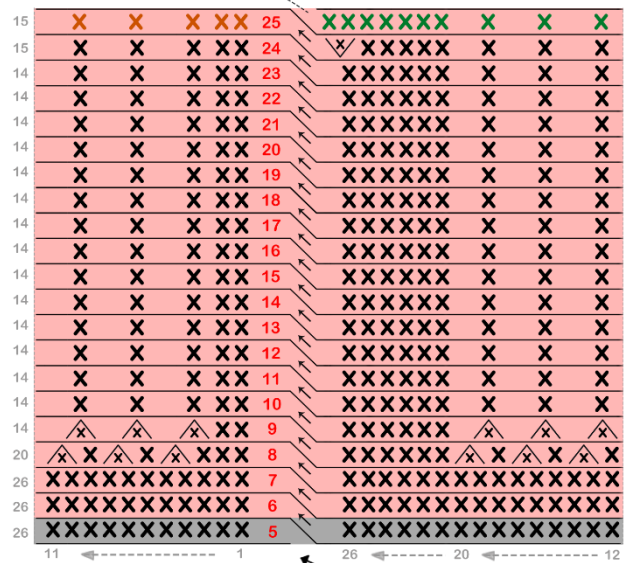
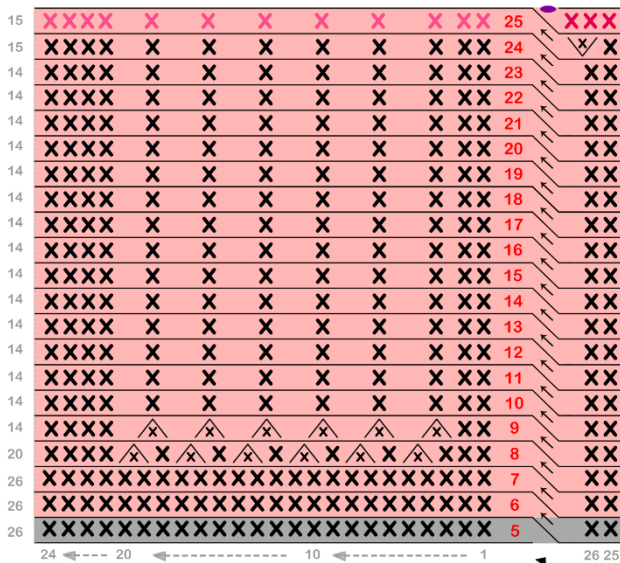
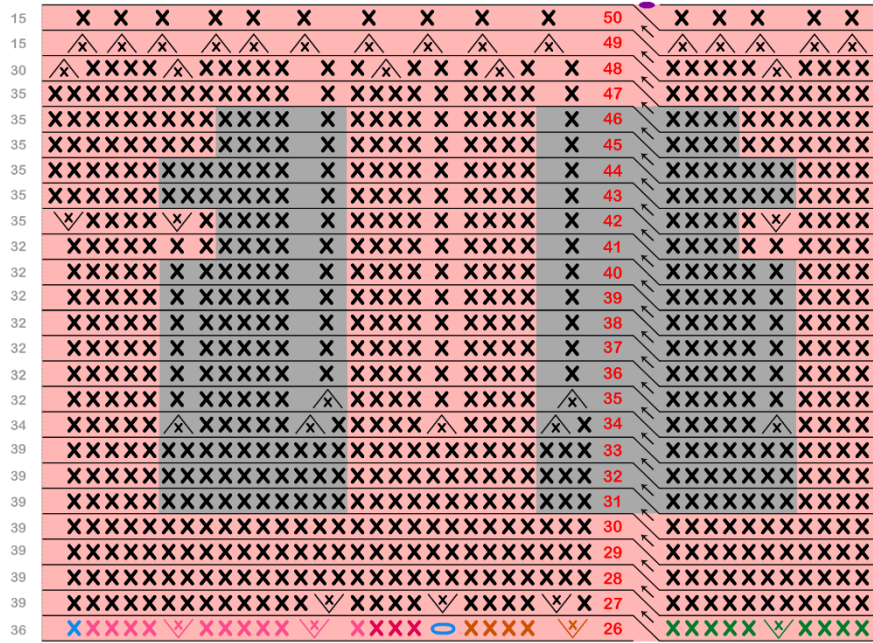


Row	Code	St.
Begin with 3 chains for foundation.		
Black code-use black yarn - Red code-use red yarn		
1	ch, sc 8. (Around 3chains).	8
2	inc, sc, inc 3, sc, inc 2.	14
3	[inc, sc 2, sc, inc, sc, inc]*2 times.	20
4	[inc, sc 3, sc 2, inc, sc 2, inc]*2 times.	26
5	sc 26.	26
Fill polyester into feet.		
6-7	sc 26.	26
8	sc 2, [sc, dec]*6 times, sc 6.	20
9	sc 2, dec 6, sc 6.	14
10-25	sc 14.	14
Make 2 pieces, the 2nd piece crochet continuously with the 1st piece.		
*26	inc, sc 4, ch, sc 4, inc, sc 5, inc, sc 4, sc, sc 4, inc, sc 5. *See how to crochet legs connection on page. 7-9	36
27	sc, inc, sc 4, inc, sc 4, inc, sc 24.	39
28-30	sc 39.	39
Pause, insert wire and polyester. #If you don't want to put the wire, You can skip this step.		
31-33	sc 3, sc 10, sc 10, sc 9, sc 7.	39
34	dec, sc, sc 4, dec, sc 4, sc, dec, sc 5, dec, sc 9, dec, sc 5.	34
35	dec, sc 9, dec, sc 6, sc 9, sc 6.	32
36-40	sc, sc 9, sc 7, sc 9, sc 6.	32
41	sc, sc 9, sc 5, sc 13, sc 4.	32
42	sc, sc 9, sc 5, sc, inc, [sc 4, inc]*2 times, sc, sc 4.	35
43-44	sc, sc 9, sc 8, sc 10, sc 7.	35
45-46	sc, sc 9, sc 5, sc 16, sc 4.	35
47	sc 35.	35
48	sc 2, dec, sc 3, dec, sc 7, dec, [sc 4, dec]*2 times, sc 5.	30
49	dec 15.	15
50	sc 15. slst.	15
Fill polyester until full.		

* The body may seem twisted according to the way you crochet, just twist the body into the opposite, The pattern on the body will be straight.



Body diagram



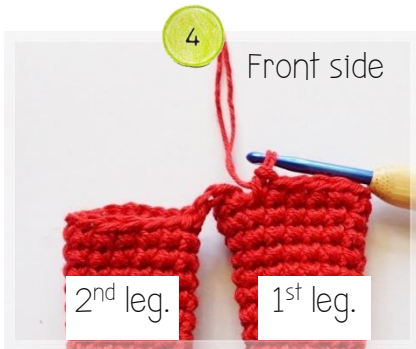
Front side.



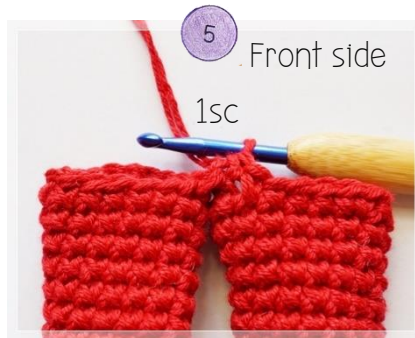
Crochet inc, sc 4, 1 ch.



Connect with 1st leg piece on the side.



Crochet
sc 4, inc, sc 5, inc, sc 4.



Crochet *sc* onto 1 *ch* as
 in pic 2.



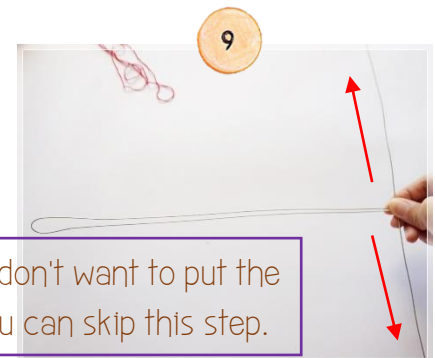
Continue crochet *4sc, inc, 5sc.* on
 2nd leg. You should be done with row



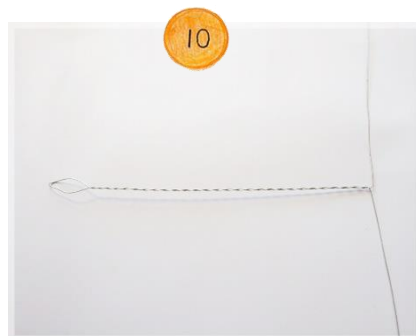
Continue crochet until row
 30. Cut wire to be 30 inches
 long, then bend in half.



Measure the length to be
 7.5 inches as in pic.



Bend wire to the opposite
 sides as shown in pic 9.



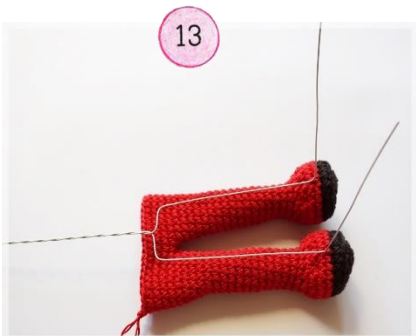
Twist the upper end.



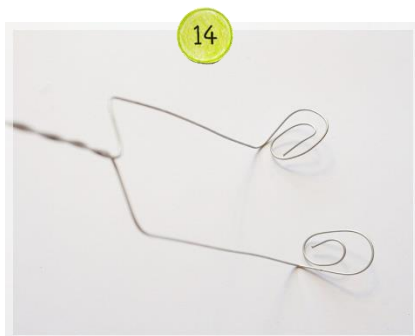
Lay wire over the body.



Bend wire as shown in
 pic 12.



Bend wire end as shown
 in the position of the feet.



And bend the rest as shown in
 picture to become the feet.



Then bend the foot downward
 so you can insert it easier.



Insert wire into legs.



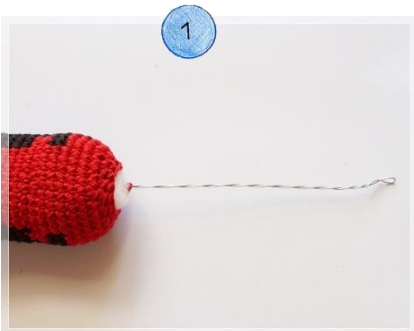
Press feet and bend wire end to be upright.



Slowly add polyester until full, then continue to crochet the rest of body and gradually, fill with polyester.



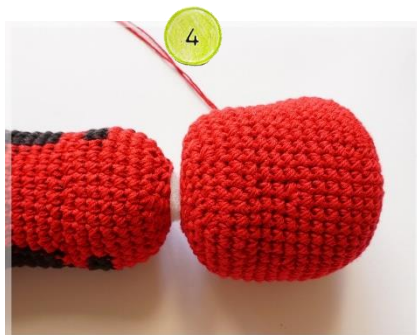
How to assemble body



Bend wire to be as shown in pic 1 and 2.



Use scissors or fingers to make way for the wire on the head piece.



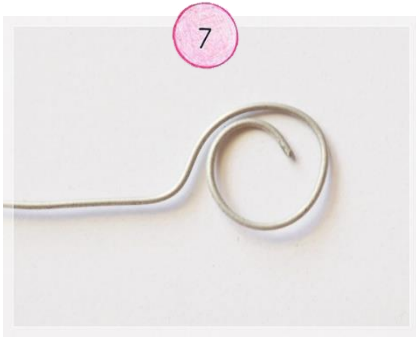
Insert wire into head piece.



Add polyester to the neck part and sew head and body together.



Cut wire to be 18 inches.



Bend one side of the wire as shown in pic 7.



Insert the bend side into an arm piece.



Fill with polyester until full.



Use a stick or hook to make way for the wire between row 45-46. As shown in pic 12-13.



Insert wire with one side of the arm and sew it on.



Cut and bend the other side of wire then insert the other arm.



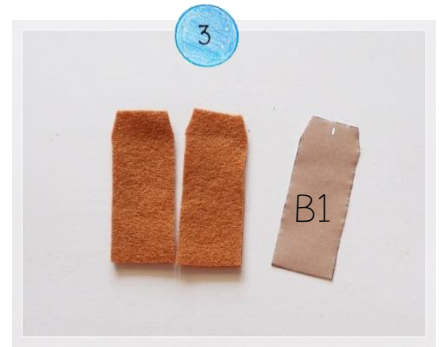
Bend arm backward as shown in pic 16.



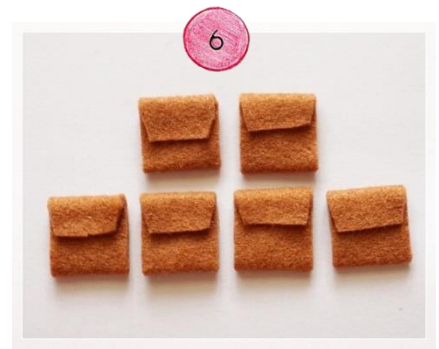
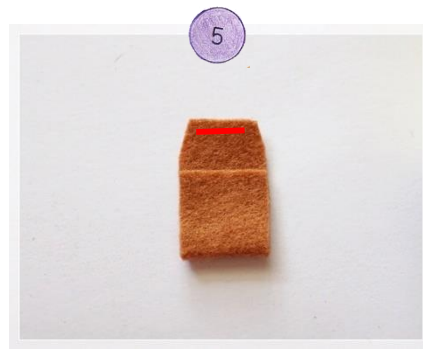
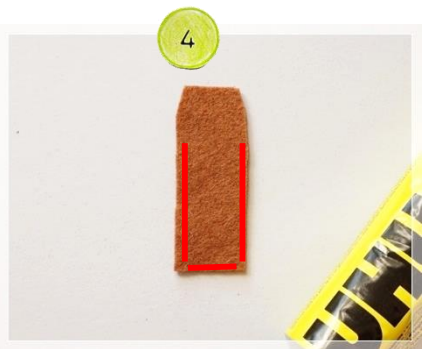
Gradually fill with polyester until full.



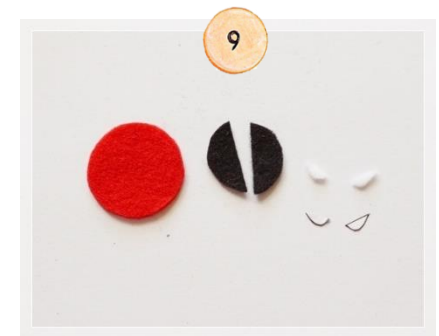
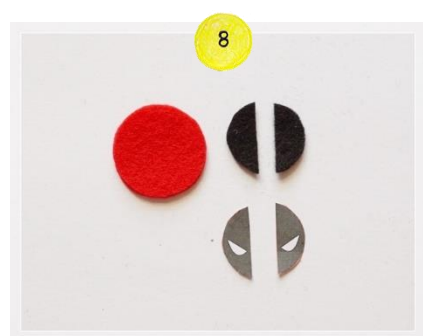
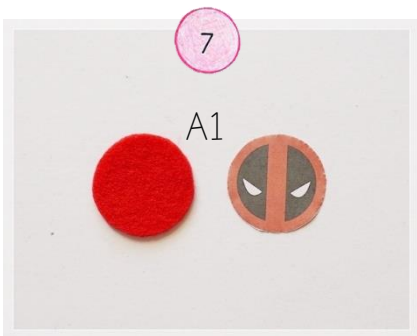
Decoration



Cut felt after colors and number (amount) of forms on page 17.



B1 and B2 after cutting apply glue as shown in picture 4-5.

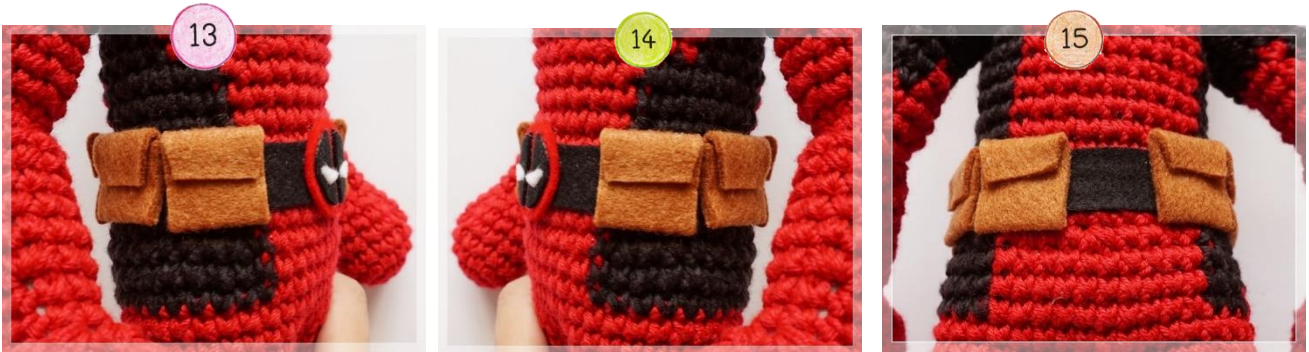


A1 cut in 3 parts as shown in pic 7-9, start with red, then black, then white.



Glue all pieces together as shown in pic 10.

A2 glue on to body between row 35-37. and A1 as buckle at the front.



Glue B1 to the side of the belt as shown in pic 13-15, 3 pieces each side.



Glue A3 as shown in pic 16-17 and B2 as shown in pic 18.



Sew on the topknot onto the head as shown in pic 19-21.



And also E1 and E2 cut and glue on as shown in pic 22-24.



Use 2 string of black yarn.
 S1 : ch 17. : make 3 pieces.
 S2 : ch 12. : make 2 pieces.

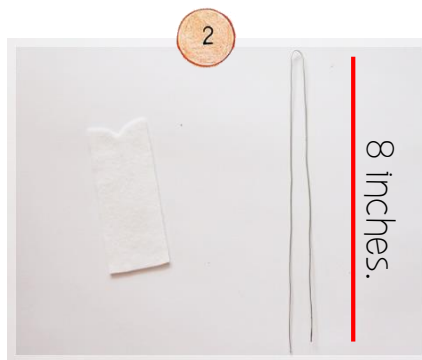
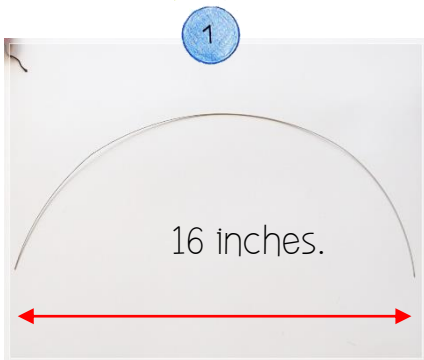
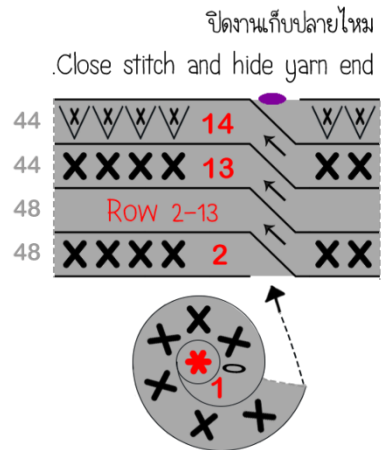
And sew on as shown.



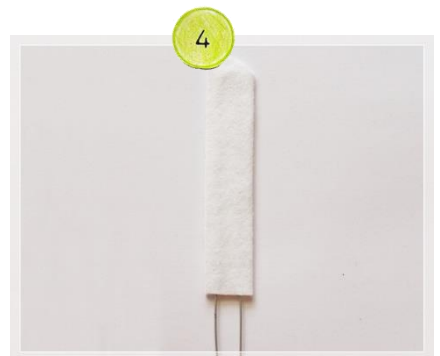
Hilt

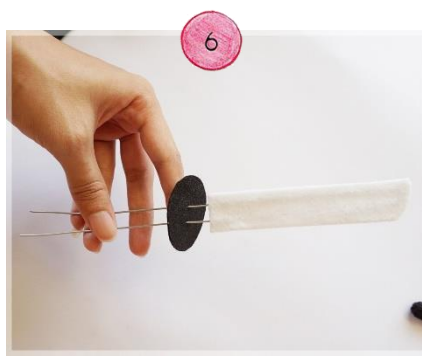
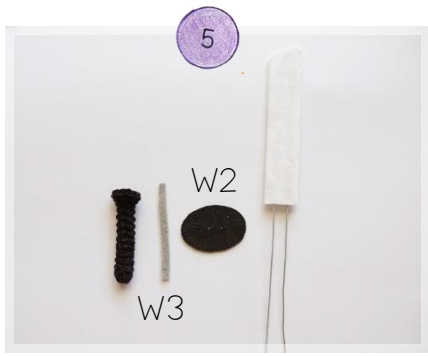
Use 4 ply black colored 2 strings,
 hook size 5.0 mm, make 2 piece.

Row	Code	St.
1-13	sc 6. (magic ring)	6
14	inc 6. slst.	12
Close stitch and hide yarn end.		

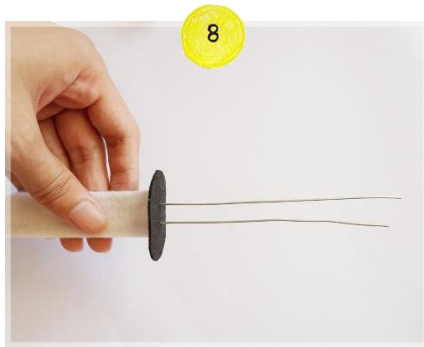


Cut wire to be 16 inches long.
 Get w1 glue on to wire as shown.

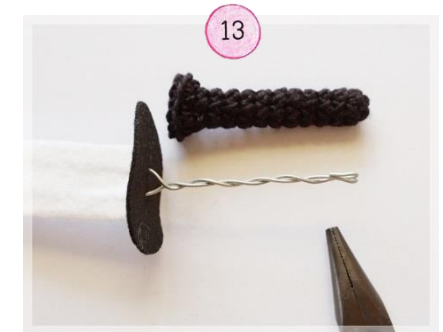
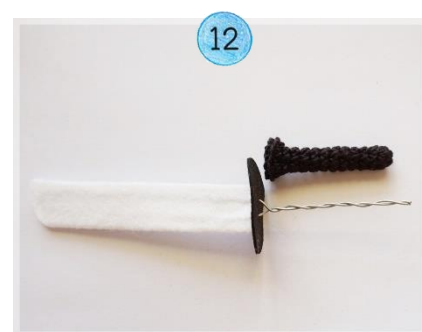
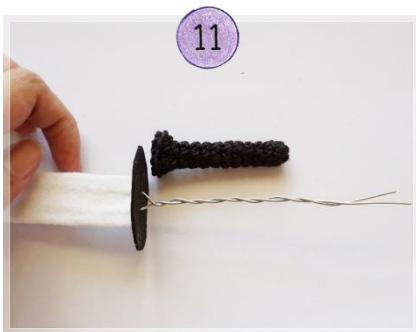




Get W2 glue on as shown in pic 6-7.



Wait until dry, twist the rest of wire as shown.



Measure wire to be 1 cm longer than hilt and cut of the excess wire and bend the 1 cm as shown in pic 13.



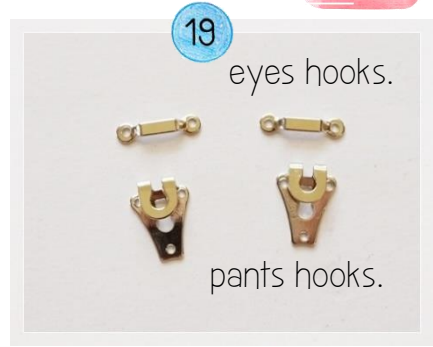
Glue the wire and cover the wire with the hilt part.



Glue on W3 as shown.



Cut W4, 4 pieces.



Use 2 pants and 2 eyes hooks.



Sew on the Pants hook to two of the W4.



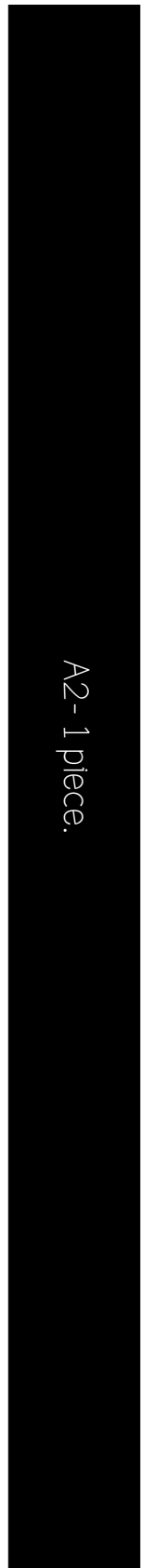
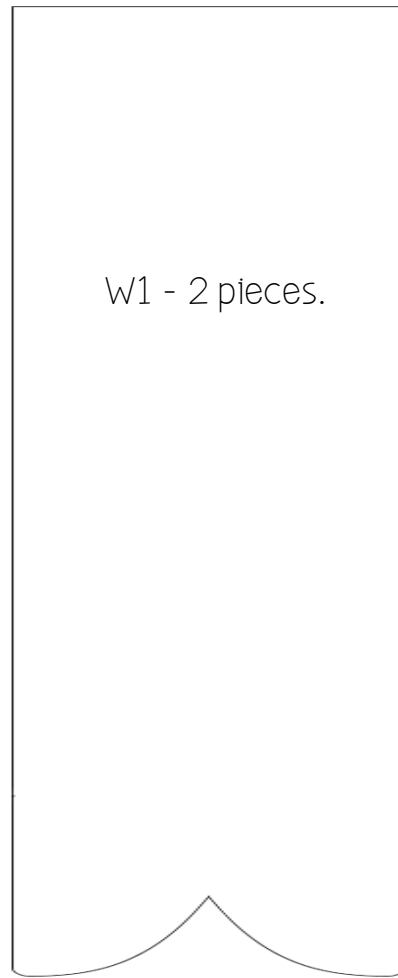
Then sew the W4 with the pants hooks onto the ones without the pants hooks. Sew to seal 3 sides to make the sword shell.



Sew on the eyes hooks on to the back of the body.



Print this on to a sized A4 paper.



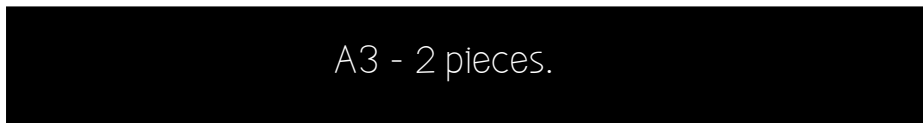
A1
1 piece.



B1 - 4 pieces.



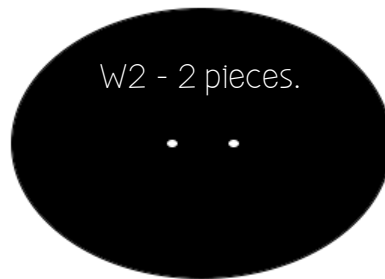
B2 - 2 pieces.



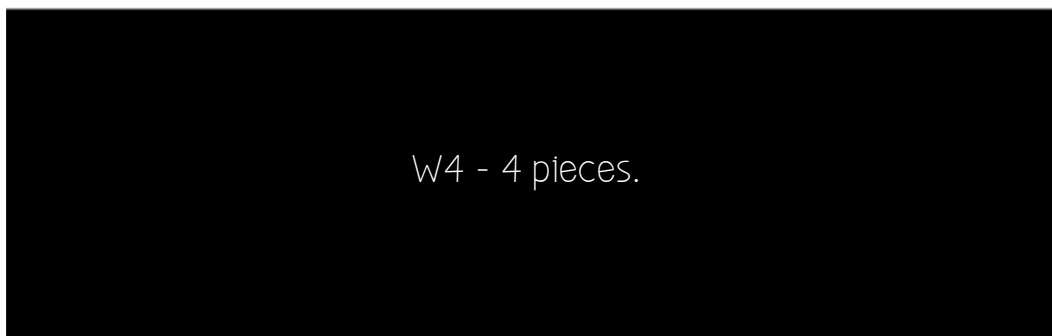
A3 - 2 pieces.



W3 - 2 pieces.



W2 - 2 pieces.



W4 - 4 pieces.



More technique.

<https://guichai-dolls.wixsite.com/guichaidolls>



Of course you can decorate it more and as your ideas takes you

Or even use other kinds of yarn to make it look different.

This pattern is for individual use only, you are not allowed to copy, share or sale this pattern unless you have a written permit from Guichai Dolls.



Guichai-dolls@hotmail.com



www.Guichai.etsy.com



www.facebook.com/GuichaiDolls



www.instagram.com/guichaidolls

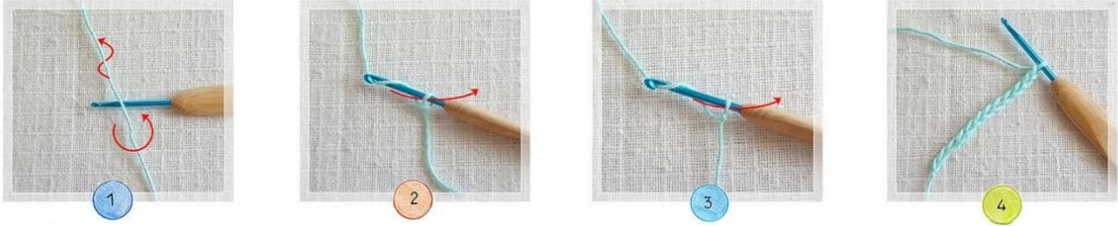
© 2018 Guichai dolls. All rights reserved. **This pattern is for individual use only, it is not allowed to copy, translate, Sale or give out to any one after your purchase.** But you are free to do anything with the finished crochet, give as a gift Or even sale the finished crochet. :

Design and pattern by Guichai dolls. <http://www.Guichai.etsy.com>

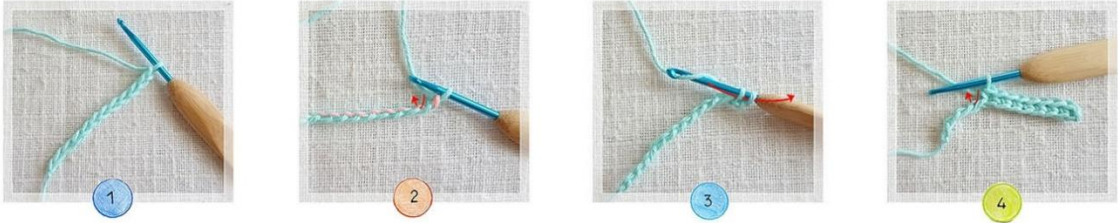
Code

Video-Clip,
<https://youtu.be/jd87Czw6G6g>

o : ch, chain



Begin with chain



Turn



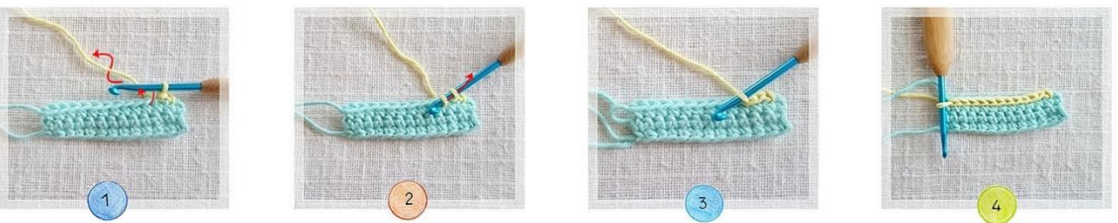
X : sc, single crochet



X : sc blo, single crochet back loop



C, ● : sl, slip stitch



∇, V : inc, increase(Single crochet)

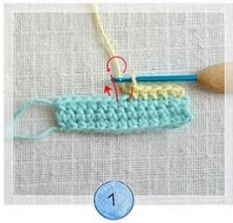
∇ : half double crochet increase

∇ : double crochet increase

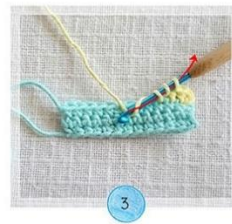
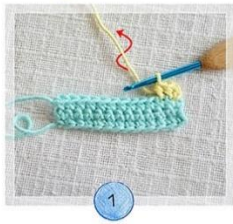


∧, A : dec, decrease

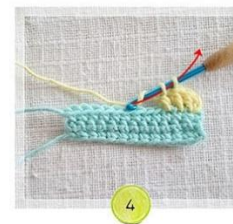
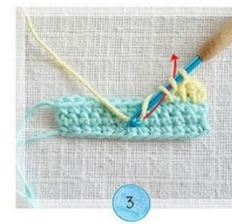
∧ : double crochet decrease



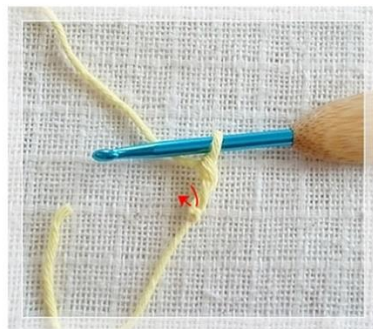
T : hdc, half double crochet



⌣, F : dc, double crochet



Magic ring





For different languages **US**, **UK**, **DE**, **DK**, **NL**, **IT**, **FR**, **ES**, **RU**.
Hope you can understand it easier.

If it is unclear you can download it : <http://bit.ly/2ppwBUY>

BASIC CROCHET STITCHES

BY GUICHAÏ DOLLS

Code	US	UK	DE	DK	NL	IT	FR	ES	RU
○	chain (ch)	chain stitch (ch)	Luftmasche (Lm)	luftmaske (lm)	losse steek (l)	catenella (cat)	maille en l'air (ml)	cadena (cad)	воздушная петля (вп)
C OR ●	slip stitch (slst)	slip stitch (ss)	Kettmasche (Ktm)	kædemaske (km)	halve vaste (hv)	maglia bassissima (mbss)	maille coulée (mc)	punto enano (pe)	соединительный столбик (сс)
X	single crochet (sc)	double crochet (dc)	feste Masche (fM)	fastmaske (fm)	vaste (v)	maglia bassa (mbs)	maille serrée (ms)	medio punto (mp)	столбик без наки (сбн)
T	half double (hdc)	half treble crochet (htr)	halbes Stäbchen (hStb)	halv stangmaske (hstm)	half, halve stokje/s (hst)	mezza maglia alta (mmalt)	demi-bridge (db)	punto medio alto o media vareta (pmv)	полустолбик с накидом (пссн)
F	double crochet (dc)	treble crochet (tr)	Stäbchen (Stb)	stangmaske (stm)	stokje/s (st)	maglia alta (malt)	bridge (b)	punto alto o vareta (pv)	столбик с накидом (ссн)
F	triple crochet (tr)	double treble crochet (dtr)	Doppelstäbchen (DStb)	dobbelt stangmaske (dbstm)	dubbel stokje (dst)	maglia altissima (maltss)	double bridge (Db)	punto alto doble o vareta doble (pvd)	столбик с двумя накидами (сс2н)
∧ OR A	sc decrease (dec)	dc decrease (dec)	Abnahme (Abn / 2fMzus)	fastmaske indtag (indt)	v minderen (2 v sam)	diminuzione (dim)	diminution (dim)	disminución de medios puntos (dis)	убавка (уб)
V	sc increase (inc)	dc increase (inc)	Zunahme (Zun / fMzun)	fastmaske udtag (udt)	2 v in vlg v	aumento (aum)	augmentation (augm)	aumento de medios puntos (aum)	прибавка (приб)

YARN WEIGHT

BY GUICHAÏ DOLLS

	LACE	SUPER FINE	FINE	LIGHT	MEDIUM	BULKY	SUPER BULKY
Type of yarns in category	Fingering 10-count crochet thread	Sock, Fingering, Baby	Sport, Baby	DK, Light Worsted	Worsted, Afghan, Aran	Chunky, Craft, Rug	Bulky, Roving
Knitting Gauge Range (st st)	33-40	27-32	23-26	21-24	16-20	12-15	7-11
Crocheting Gauge Range (sc)	32-42 dc	21-32	16-20	12-17	11-14	8-11	7-9
Recommended Hook in Metric Size Range	1.4-1.6 mm.	2.25-3.5 mm.	3.5-4.5 mm.	4.5-5.5 mm.	5.5-6.5 mm.	6.5-9 mm.	9 mm. and larger

© 2018 Guichai dolls. All rights reserved. **This pattern is for individual use only, it is not allowed to copy, translate, Sale or give out to any one after your purchase.** But you are free to do anything with the finished crochet, give as a gift Or even sale the finished crochet. :

Design and pattern by Guichai dolls. <http://www.Guichai.etsy.com>