



ЧудоЦяця
etsy.com/shop/ChudoTsytsya

www.SweetPatternsLab.etsy.com

MATERIALS and SUPPLY

You can use any yarn you want for this pattern. Just make sure that you combine yarn the same or almost the same thickness. Please use correct hook for your chosen yarn.

- ★ 2 balls of Egitto Titan Wool beige color (main) – cotton Fine yarn (120meters (≈131 yards) / 50g);
- ★ Additional colors yarn for shoes, socks and dress if you'll crochet one (the palette can contain any number of shades, it can be the remains of yarn in small quantities). The main thing that additional yarn matches composition and yardage of main color yarn.
- ★ Little bit of brown and white cotton Fine yarn for eyes. (I use Yarn Art Begonia 169 meters (≈184 yards) / 50g);
- ★ Hook size 2 mm (metal hook US1/UK1) or according to your chosen yarn recommendations;
- ★ Fiber filling
- ★ Eyes: beads or safety. I use plastic safety eyes diameter 12 mm
- ★ Aluminium wire diameter 1,5 mm for wire frame (as an option, you can crochet without it);
- ★ Roll medical plaster tape (for wire frame)
- ★ Pliers
- ★ Plastic or carton for shoe insole (you can cut out of plastic package)
- ★ Fabric for dress (50x80 cm/19,7x31,5"), pantaloons (50x50 cm/19,7x19,7") and small pieces for apron and collar.
- ★ Elastic and snap fasteners
- ★ Laces, cross stitch floss, buttons and other decorations
- ★ Buttons for button joint details
- ★ Dry pastel and brush to make blush

ABBREVIATIONS

Ch – chain

Sc – single crochet

Dc – double crochet

Inc – increase (2 sc or 2 dc in one stitch)

Dec – decrease (crochet next 2 stitches together)

[n] Inc/Dec – increase/decrease [n] times in a row

Sl st – slip stitch

St – stitch

R – row/round

() x... - repeat instructions in brackets ... times

Number in () at the end of the Row indicates number of st in that Row

HEAD + EARS

Crochet with main yarn color – *Beige*.

R1: 6 sc in magic ring

R2: 6 inc (12)

R3: (1 sc, inc) x 6 (18)

R4: (2 sc, inc) x 6 (24)

R5: (3 sc, inc) x 6 (30)

R6: (4 sc, inc) x 6 (36)

R7: (5 sc, inc) x 6 (42)

R8: (6 sc, inc) x 6 (48)

R9: (7 sc, inc) x 6 (54)

R10: (8 sc, inc) x 6 (60)

R11: (9 sc, inc) x 6 (66)

R12: (10 sc, inc) x 6 (72)

R13-25: 72 sc (13 rounds)

R26: (10 sc, dec) x 6 (66)

R27: (9 sc, dec) x 6 (60)

R28: (8 sc, dec) x 6 (54)

R29: (7 sc, dec) x 6 (48)

R30: (6 sc, dec) x 6 (42)

R31: (5 sc, dec) x 6 (36)

If you are using safety eyes we'll attach them at this stage. I use eyes with diameter 12 mm/0,47 in

First crochet circles for eyes with cotton yarn (I use Yarn Art Begonia).

Work with **Brown** yarn color:

R1: crochet in magic ring: ch 3, 12 dc, sl st in 3rd chain stitch, insert eye and fasten the circle. (12)

Work with **White** yarn color:

R2: ch 3, 2 dc in each stitch, sl st in 3rd chain stitch (24).

Cut the yarn leaving a long tail for assembly eye to the head. Make 2 details.

Attach eyes about between rows 17-18, the distance between them should be such that their white parts touch one another.

Stuff head with fiber filling tight!!!



Continue to crochet head.

R32: (4 sc, dec) x 6 (30)

R33: (3 sc, dec) x 6 (24)

R34: (2 sc, dec) x 6 (18)

Stuff.

R35: (1 sc, dec) x 6 (12)

Stuff to the end. Cut the yarn, hide its end inside the head.

Pin eyes circles to the head and leave them like that till sewing.



EARS

Crochet with main color yarn – **Beige**

R1: 6 sc in magic ring

R2: (1 sc, inc) x 3 (9)

R3: 9 sc

R4: (2 sc, inc) x 3 (12)

Cut the yarn leaving a long tail for assembly.

Make 2 details. Pin to the head.



BODY

Crochet with main yarn – *Beige*.

R1: 6 sc in magic ring

R2: 6 inc (12)

R3: (1 sc, inc) x 6 (18)

R4: (2 sc, inc) x 6 (24)

R5: (3 sc, inc) x 6 (30)

R6: (4 sc, inc) x 6 (36)

R7: (5 sc, inc) x 6 (42)

R8: (6 sc, inc) x 6 (48)

R9: (7 sc, inc) x 6 (54)

R10: (8 sc, inc) x 6 (60)

R11-20: 60 sc (10 rounds)

R21: 18 sc, 12 dec in a row, 18 sc (48)

R22-24: 48 sc (3 rounds)

R25: 15 sc, (1 sc, dec) x 6, 15 sc (42)

R26-28: 42 sc (3 rounds)

R29: (5 sc, dec) x 6 (36)

R30-32: 36 sc (3 rounds)

R33: (4 sc, dec) x 6 (30)

R34-36: 30 sc (3 rounds)

R37: (3 sc, dec) x 6 (24)

Cut the yarn leaving a long tail for sewing head. Stuff body tight.



LEGS

Start to crochet shoe sole with ***Additional*** yarn color – Brown in my case.

Crochet sole in rounds like for baby botties. Make 2 details for each leg. We'll put plastic inside between them for our toy sustainability.

If it is not fundamentally important that the toy was stable, then this moment can be missed and you can crochet as usual with a single sole.

R1: Make a chain of 9, 2 sc into the 2nd ch from the hook, sc in next 6 ch, 4 sc in the last chain. Working on other side of beginning chain: sc in next 6 ch, Inc in the last chain. (20)

NOTE: We'll crochet in spirals next, without sl st at the end of the round. Use marker to indicate beginning of the round.

R2: Inc in beginning sc of Round 1, 1 sc, Inc, 4 sc, 6 Inc (1 inc in each st), 4 sc, Inc, 1 sc, Inc (30)

R3: 1 sc, Inc, 7 sc, (1 sc, inc) x 6, 7 sc, Inc, 1 sc (38)

R4: 2 sc, Inc, 10 sc, (1 sc, inc) x 6, 10 sc, Inc, 2 sc (46)

Cut the yarn.

Outline crochet outsole with a pencil on a sheet of paper. Cut it out – this is our pattern for the shoes insole. Transfer it to the plastic and cut it out.

When you'll crochet second detail for the sole, don't cut the yarn, we'll continue working with it.

R5: Join two sole details with SC crocheting on the back loops of one detail and front loops of another. Insert insole between two details having crocheted half the row and continue to crochet to the end of the row in the same way.

There should be 46 sc.



Change yarn color to ***Additional***.

Continue to crochet leg.

R6-8: 46 sc (3 rounds)

R9: 14 sc, (1 sc, dec) x 6, 14 sc (40)

R10: 40 sc

R11: 5 sc, (1 sc, dec) x 10, 5 sc (30)

R12: 30 sc

R13: 2 sc, dec, 7 sc, 4 dec, 7 sc, dec, 2 sc (24)

Stuff tight. At this step we need to make two details out of wire.

Take a piece of wire length about 15 cm/5,9 in. Bend small part at the bottom with pliers and wrap it with plaster around. Ready wire bend as shown on the picture, approx 2 cm/0,78 in and insert it in the shoe. Further we'll crochet with wire inside. Extra wire will be cut off at the end of crocheting.



Change yarn to **Beige** – main color.

R14: 24 sc on the back loop of the st

R15: (2 sc, dec) x 6 (18)

R16: (1 sc, dec) x 6 (12)

R17-41: 12 sc (25 rounds)

Stuff each 5 rounds to get smooth looking leg.

R42: 6 dec (6)

Fasten off stitches, close the hole and hide yarn inside the leg.

Make 2 legs.

WINGS

Crochet 3 details with main yarn color – *Beige*:

R1: 6 sc in magic ring

R2-5: 6 sc (4 rounds)

Crochet 4th detail:

R1: 6 sc in magic ring

R2-6: 6 sc (5 rounds)

Don't cut the yarn. Put a marker and continue to join details between each other.

R7: crochet 3 sc, join 2nd detail, crochet remaining 9 sc to the end of the row (12)

R8: crochet 6 sc, join 3rd detail, crochet remaining 12 sc to the end of the row

R9: crochet 9 sc, join last detail and crochet remaining 15 sc to the end of the row (24)

R10-11: 24 sc (2 rounds)



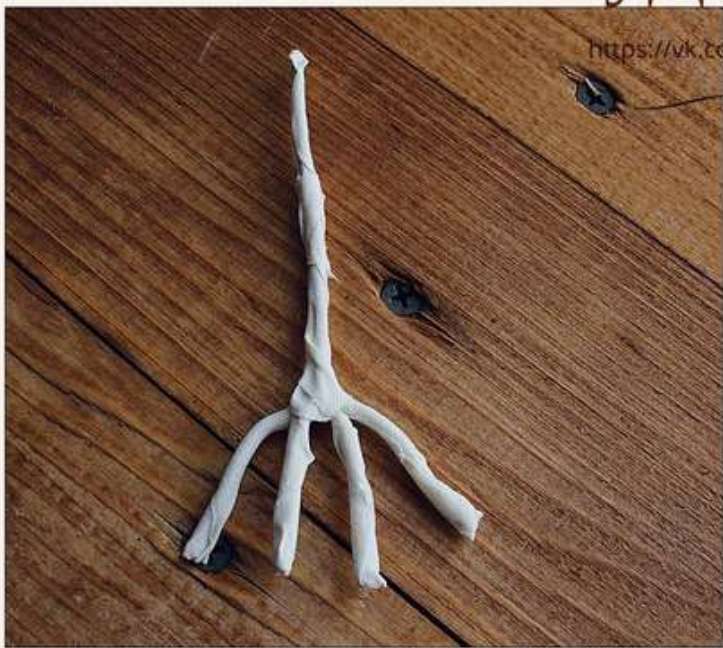
Make a wire frame as shown on the picture, wrap it with plaster around. Insert it in the wing. Further we'll crochet together with the wire frame. Extra wire will be cut off at the end.

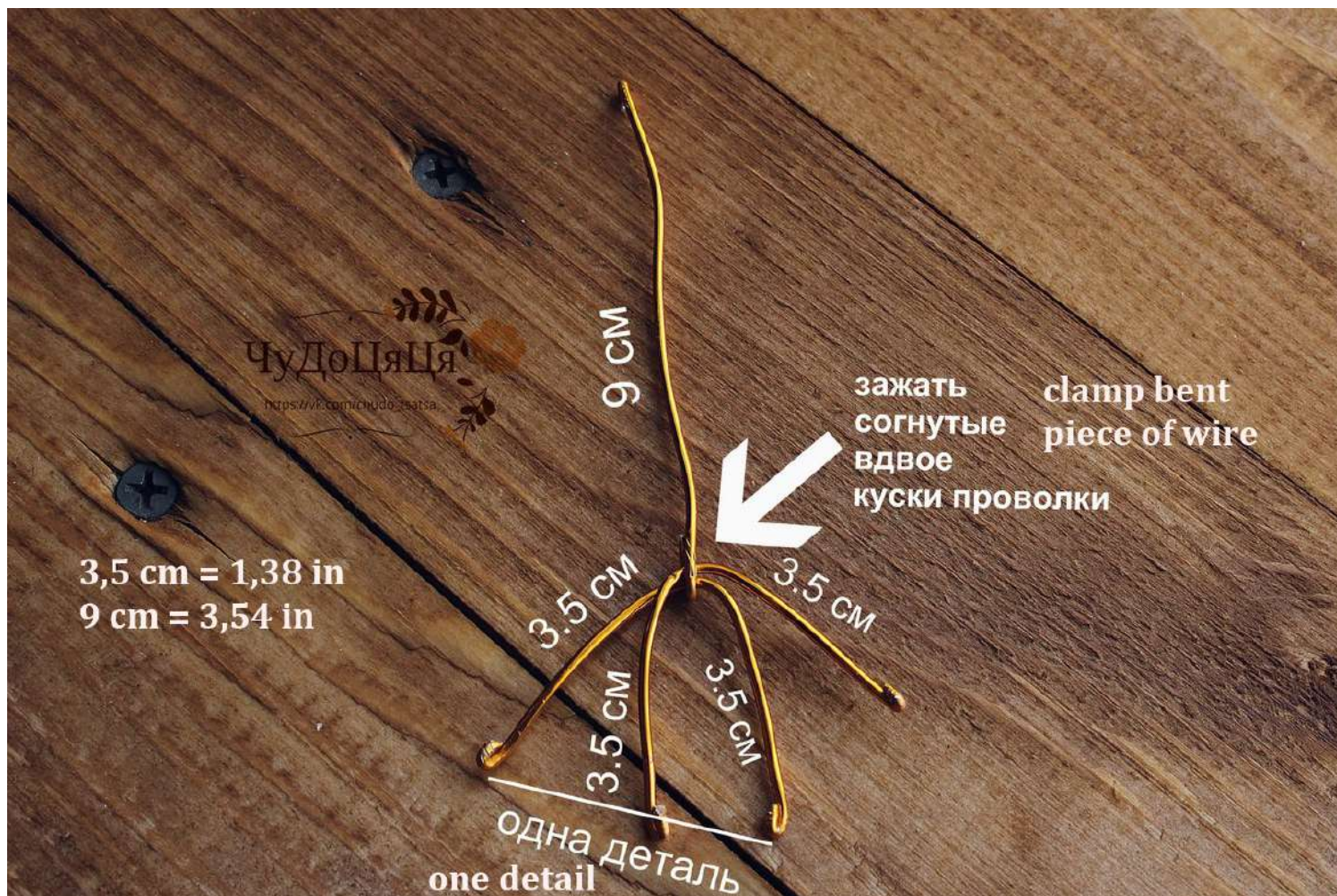
Stuff quite tight



ЧудоЦяЦя

https://vk.com/chudo_tsatsa





R12: (2 sc, dec) x 6 (18)

R13-15: 18 sc (3 rounds)

R16: (1 sc, dec) x 6 (12)

Stuff with fiber.

R17-36: 12 sc (20 rounds)

Stuff each 5 rounds to the top.

R37: 6 dec

Fasten off stitches, close the hole.

Make 2 details.

BOOT CUFFS

Knit boot cuffs. Legs will be sewed together with the boot cuffs.

Use the same thickness yarn as for the body.

Cast on 20 stitches and knit 10 rows stockinette stitch. I knitted around with double pointed (socks) needles. If you knit on two needles, you'll just need to sew cuffs after.



ASSEMBLY. FACE DESIGN

Sew legs approx. between rows 12-13.

Follow VIDEO guidances on youtube to sew details and finish face design:

Owl. Sew eyes and ears. Embroider nose. <https://youtu.be/beMIQTcnZo0>

Owl. Ear decor. <https://youtu.be/r27JxAYc ts>

Owl. Sew legs. <https://youtu.be/pte7pBhUOTk>

Owl. Sew wings. <https://youtu.be/N0J3KhxVLo0>

Owl. Sew head to the body. <https://youtu.be/4jppNekCZMM>

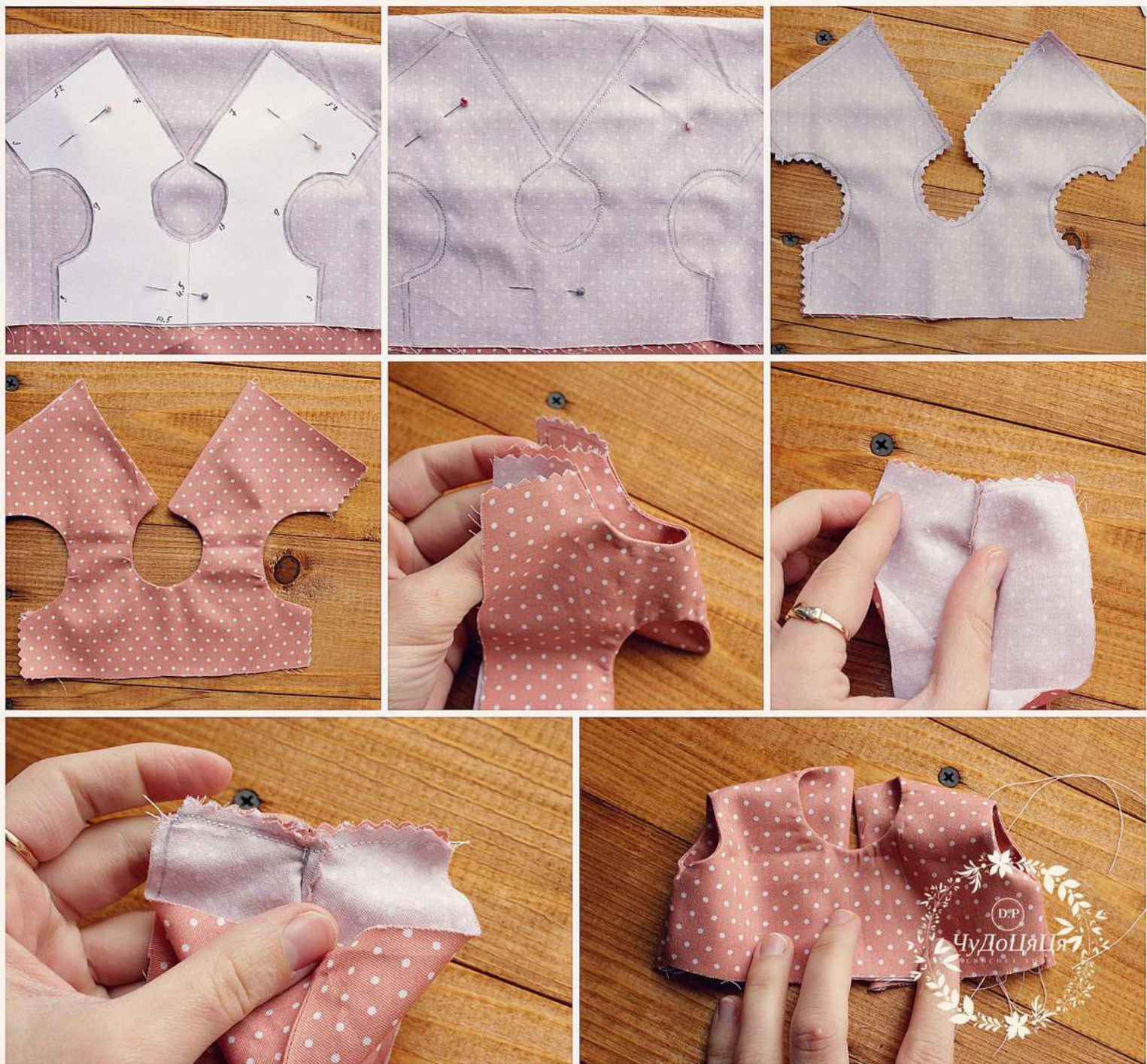
DRESSES

OPTION N^o1 (Sewed dress)

Print the pattern below in the end of the PDF file or copy it by attaching a sheet of paper to the computer screen and transfer the pattern to the paper with a pencil. Cut it out.

Try dress pattern on the owl and if it is small or big, just adjust it according to your size.

Transfer ready pattern to the fabric folded twice. Draw allowance line beside in the distance 0,5 cm/0,2 in from the pattern line. Sew the parts indicated on the picture by hands with backstitch technique (or on sewing machine). Sew only neck and armholes for sleeves. Turn out to right side, iron well. Sew sides together. Top of the dress is ready.



For bottom of the dress take a piece of fabric. I used 10-13 x 60 cm/3,94-5,12 x 23,62 in.

Finish bottom and sides. Make two lines of wide stitches on the top of fabric, pull thread making frill to the length of the bottom part of top of the dress.

Connect top and bottom of the dress with pins bending the front and the back of the top of the dress inside. In such way we'll get nice front and inside parts of the dress. First sew by hands, then on sewing machine if you are using it.

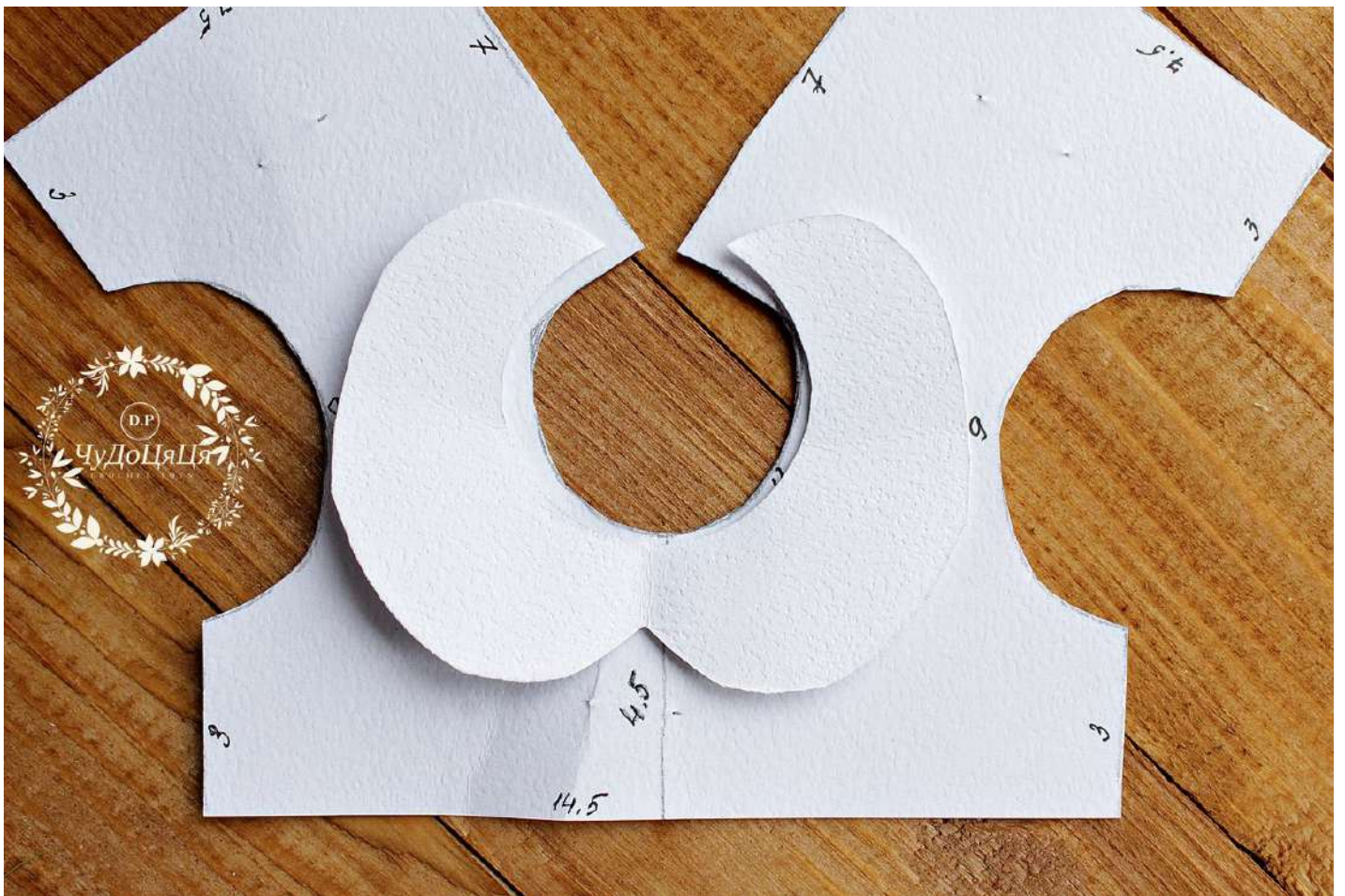
At the back of our dress you can sew ribbon to tie up the dress, velcro or you can make small fasteners.



COLLAR:

Take the pattern of the top of the dress and draw the collar of the size of the neck, as shown on the picture below.

The width should be such that the edge of the collar touches the edge of the shoulder part of the top of the dress.



Transfer ready pattern to the fabric folded twice.

NOTE: If you are going to embroider collar, I recommend to do it before sewing it. First time I was embroidering ready collar and it was very difficult.

When the pattern is ready, sew the collar as shown on the picture leaving a small hole to turn it out.

Iron collar and sew the hole with invisible seam. Ready collar sew to the dress.







OPTION №2 (Crochet dress)

I crochet dress with same yarn type as I crochet owl. I used 2 colors. You can take any yarn color and any of its quantity.

We work in turns.

R1: Make a chain of 46, ch 3. Crochet 46 dc, ch 3, turn

R2: 6 dc, ch 10 (for sleeve), skip 10 st, continue to crochet in 11th st, 14 dc, ch10 (for sleeve), skip 10 st, continue to crochet in 11th st, 6 dc, ch 3, turn

R3: 6 dc, 10 dc in first arc of chains, 14 dc, 10 dc in second arc of chains, 6 dc, ch 3, turn

R4: 2 dc in each stitch (92)

R5-19: 92 dc (15 rows)

Crochet dress around with sc, make loops for buttons. Sew buttons to the dress



PANTALOONS

Print the pattern (in the end of the PDF file) or copy it by attaching a sheet of paper to the computer screen and transfer the pattern to the paper with a pencil.

Make two details.

Fold fabric in half, so the bend line on the paper pattern (shown as -----) matches bend line of fabric. Pin the pattern to fabric and mark it with pencil around. Draw allowance line beside in the distance 0,5 cm/ 0,2 in from the

pattern line. Cut out the details.

Top of the pantaloons bend about 1-1,5 cm/0,4-0,6 in from the edge, so you can insert elastic inside. Measure and cut the length of elastic according to the body circumference. With the help of safety pin pull elastic through both details of the panties. Fix the edges of the elastic together. Evenly distribute it along the length.

Sew the side parts of the top as shown on the picture.

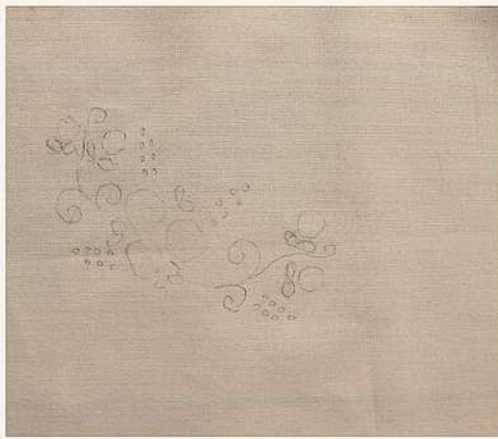
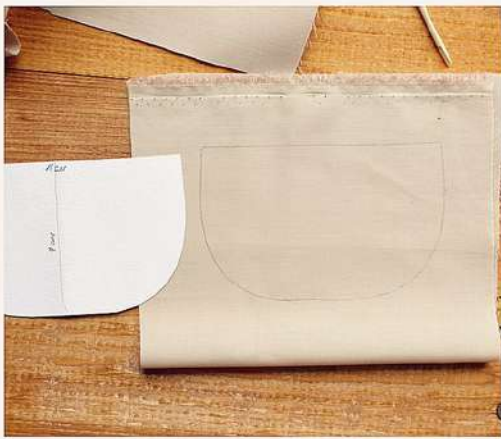
Now bend bottom of pantaloons and insert elastic in each pantaloon-leg the same way we did for top. Sew the center, iron well and pantaloons are ready.



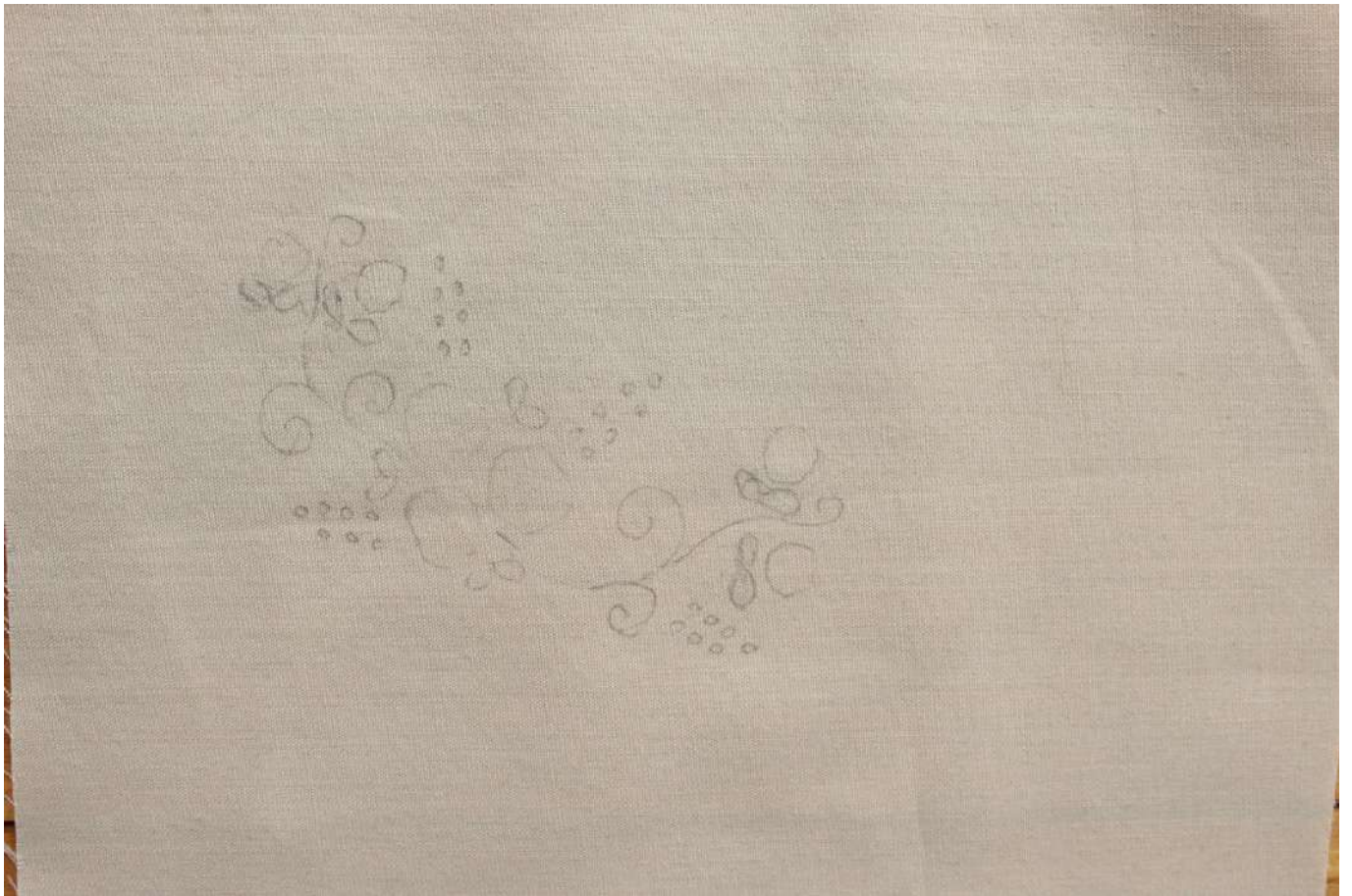
APRON

Print a pattern (in the end of the PDF file) and transfer it on the fabric. You can also embroider apron. Then fold up fabric, pin it and sew sides and bottom. Leave top of the apron unsewed for now. Turn out apron and iron well. In the center of both parts draw 2 lines and make darts, about 0,5 cm/ 0,2 in long each.

Sides and bottom decorate with lace. Then bend top of the apron inside and sew it together with the lace. Apron is ready!



Picture of the embroidering pattern more closer for your convenience.



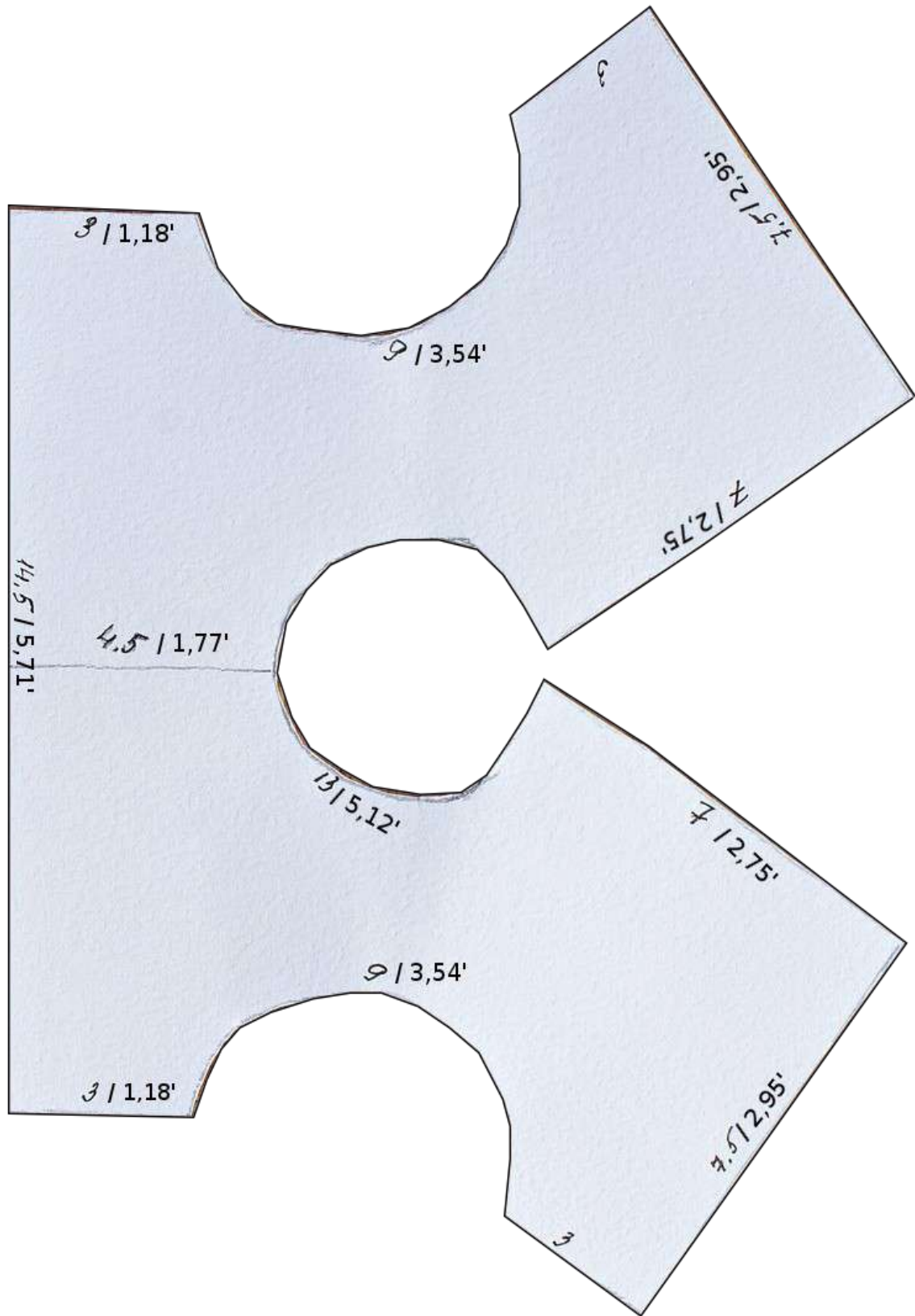
Head of the owl can be decorated with a bow.

You can crochet it or make it out of fabric. Take small rectangular piece of fabric. Sew sides leaving small hole to turn it out. Turn it out, iron well. Wrap the bow around in the center with the thread or fabric. Sew it to the head.

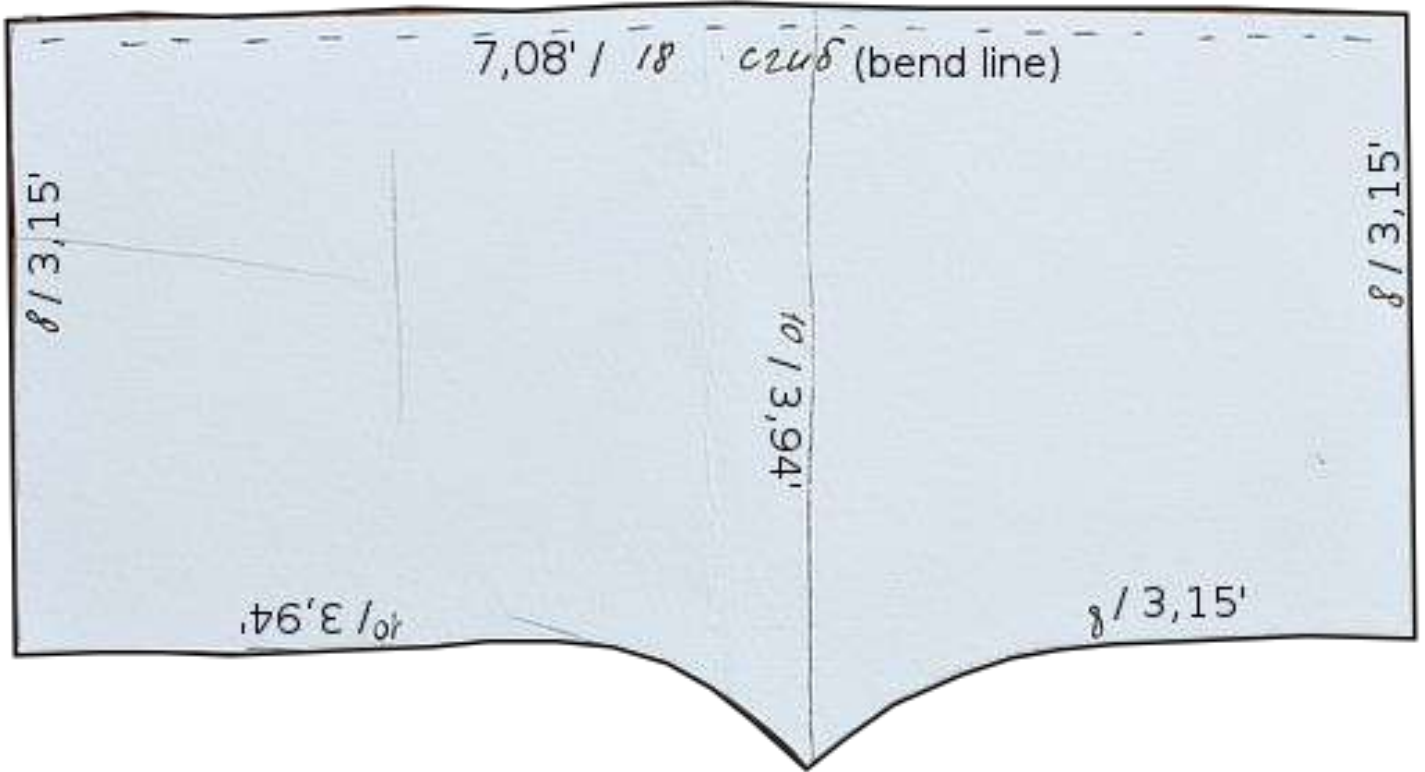


ENJOY CREATING YOUR TOY!

Top of the dress pattern



Pantaloons pattern



Apron pattern

