

CROCHET PATTERN
"SABRINKA"

Designed by Svetlana Maksimenko



Required Materials

1. Sport weight/4ply yarn Yarn Art baby cotton 50g/160m (50% cotton, 50% acrylic)

- 404 (light beige)
- 447 (blue)
- 414 (pink)
- 401 (white)

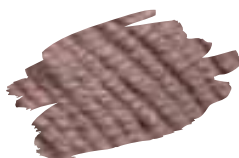
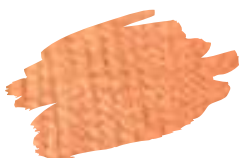


- 436 (light green)
- 426 (red)
- 416 (light lilac)
- 432 (yellow)



2. Sport weight/4ply yarn Gazzal Baby cotton 50g/165m (60% cotton, 40% acrylic)

- 3465 (orange)
- 3455 (brown)
- 3451 (turquoise)
- 3414 (lilac)



3. Blush

4. Hook 2 mm

5. Safety eyes 9 mm (2pcs.)

6. Stuffing material (fiberfill)

7. Needle with a blunt end

8. Scissors

9. Sewing pins

10. Wire with a diameter of 1 mm and 1.8 mm

11. Plastic lid or thick cardboard paper

12. Hot glue gun

13. Embroidering threads (DMC cotton) of dark brown color and red colors

14. Textile black paint

The size of the finished toy
when using the indicated
materials is about 25 cm

Required Materials

1. Sport weight/4ply yarn Gazzal Baby cotton 50g/165m (60% cotton, 40% acrylic)

- 3430 (gray)



- 3450 (dark gray)



2. Blush

3. Hook 2 mm

4. Stuffing material (fiberfill)

5. Needle with a blunt end

6. Scissors

7. Sewing pins

8. Wire with a diameter of 1 mm - about 50cm long

9. Embroidering threads (DMC cotton) of black color

10. Textile black paint

11. White felt

The size of the finished toy
when using the indicated
materials is about 9 cm

Extra (shift) stitch

A very common term in crocheting is the extra stitch.
So what is this loop?

When crocheting, almost always the marker of the beginning of the round is shifted to the right side. It is necessary to align it. And how to do it?

You just need to crochet another 1sc at the end of the round and shift the marker by one stitch.
The second stitch becomes the first and the first becomes the last. This is the shift (extra) stitch.

And the most important thing! This stitch is not included in crocheting.



Abbreviations

MR - magic ring
sc - single crochet
inc - increase (2 sc in one stitch)
dec - decrease (2 sc together)
3 sc inc - crochet 3 sc in one stitch
sc3tog - crochet 3 sc together
ch - chain
t-ch - turning chain (when work in rows)
dc - double crochet
sl st - slip stitch
FLO - front loops only
BLO - back loops only
Bobble st - crochet unfinished dc stitches in one stitch with a common top
(...) - number in brackets means a number of stitches in a round
(...)*N- repeat instruction in brackets N times

WISH YOU A PLEASANT CROCHETING

This pattern is designed for people who already have basic crochet skills.
The pattern is for personal use only. Any copying and distribution of materials are prohibited!
When publishing the finished work, please indicate the designer.
Thank you for understanding!



funny.hook

Head

Crochet in light beige color. Stuff as you go.

1. 6sc in a MR (6)
2. 6inc (12)
3. (1sc, inc)*6 (18)
4. 1sc, inc, (2sc, inc)*5, 1sc (24)
5. (3sc, inc)*6 (30)
6. 2sc, inc, (4sc, inc)*5, 2sc (36)
7. (5sc, inc)*6 (42)
8. 3sc, inc, (6sc, inc)*5, 3sc (48)
9. (7sc, inc)*6 (54)
10. 4sc, inc, (8sc, inc)*5, 4sc (60)
11. (9sc, inc)*6 (66)
- 12-19. 66sc (8 rounds)

- In round 19 mark a point between stitches 33 and 34 with a contrasting thread. It will be easier to navigate in the face design.

20. 17sc, dec, (3sc, dec)*2, 8sc, dec, (3sc, dec)*2, 17sc (60)

- 21-24. 60sc (4 rounds)

25. 16sc, inc, (2sc, inc)*3, 8sc, inc, (2sc, inc)*3, 16sc (68)

- 26-29. 68sc (4 rounds)

- Install safety eyes 9mm between rounds 22 and 23 at a distance of 5sc to the left and right from the marked point.

30. (15sc, dec)*4 (64)

31. 3sc, dec, (6sc, dec)*7, 3sc (56)

32. (5sc, dec)*8 (48)

33. 2sc, dec, (4sc, dec)*7, 2sc (40)

34. (3sc, dec)*8 (32)

35. 1sc, dec, (2sc, dec)*7, 1sc (24)

36. (1sc, dec)*8 (16)

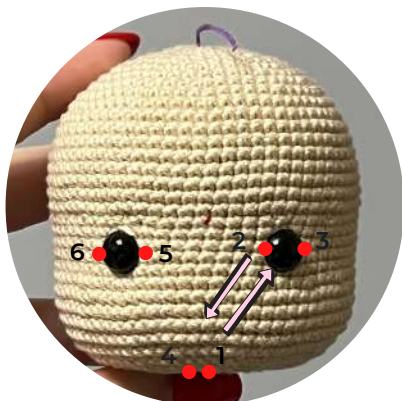
37. 8dec (8)

- Cut the yarn, fasten off, hide the ends.



Decoration

- Make a needle sculpting: insert the needle at point 1, exit through point 2, insert the needle at point 3, exit through point 4. Similarly, make a tightening for the second eye (points 1-5-6-4). Fasten off, hide the ends.



- Embroider the nose with a light beige thread (between rounds 25 and 26).
- Embroider the eyebrows with a dark brown embroidery thread.
- Embroider the whites of the eyes with a white thread.
- Draw freckles with black fabric paint.
- Tint the cheeks and nose with dry pastels or peach blush.

Ears (make 2)



Crochet in light beige color. Work in rows:

1. 4sc in a MR (4), t-ch, turn
2. 4inc (8)
 - Cut the yarn, leave the end for sewing pieces.
 - Sew on the ears, after fixing them with sewing pins (rounds 24-25, 7-8sc from the eyes)

Hair Wig

Crochet in orange color.

1. 6sc in a MR (6)
2. 6inc (12)
3. BLO: (1sc, inc)*6 (18)
4. 1sc, inc, (2sc, inc)*5, 1sc (24)
5. (3sc, inc)*6 (30)



Crochet the strands:

6. (ch24, from the second chain on the hook: 23sc, sc in the next stitch on the base)*20, ch20, from the second chain on the hook: 19sc, sc in the next stitch on the base, (ch9, from the second chain on the hook: 8sc, sc in the next stitch on the base)*8, ch20, from the second chain on the hook: 19sc, sc in the next stitch on the base.

- Cut the yarn, fasten off, hide the ends.
- Attach the yarn to the 7th unused front loop of round 2 and work: (ch14, from the second chain on the hook: 13sc, sl st in the next stitch on the base.)*5. Cut the yarn, fasten off, hide the ends.
- Put the hair wig on the head and fix 18 strands behind the head with sewing pins, leaving 8 strands of the bangs in front in the center of the face and 2 strands to the right and left of the bangs. (remove 5 strands worked in front loops of round 2).
- Using hot glue fix 18 strands on the back.
- Lay the remaining 10 strands. Leave 8 central strands of the bangs unfixed for now. The remaining 4 strands are distributed on the right and left sides of the hair (2 strands on each side). After all 22 strands are laid, fix the remaining 8 strands of the bangs in the center of the face.
- Lay the remaining 5 strands in the second layer on top of the bangs.





Ponytails (make 2)

Crochet in orange color. (Ch8, from the second chain on the hook: 7sc)*5.

- Cut the yarn, leave the end for sewing pieces.
- Twist the ponytails and sew from the bottom (see photo)
- Sew ponytails to the head.



Arms (make 2)

Start in light beige color. Stuff as you go. Insert a wire frame if necessary.

Ch5, from the second chain on the hook:

1. 3sc, 3sc in the last chain, on the other side of the chain: 2sc, inc (10)
2. (4sc, 3sc inc)*2 (14)
3. 13sc – short round (you can have another number of stitches).

- Shift the marker. It will run on the side of the arm, in the center.

Guideline – foundation chain.

Align the marker in the process with extra sc.

4. (6sc, inc)*2 (16)
- 5-6. 16sc (2 rounds)
7. 14sc, dec (15)
8. 7sc, 4-dc Bobble st, 7sc (15)
9. 7sc, dec, 6sc (14)
10. (5sc, dec)*2 (12)

- Take a wire 1mm, 20-25cm long and bend the end to the size of the palm, as shown in the photo. Insert the frame into the hand.



- Change color to yellow. Cut the light beige yarn.

11. 12sc (12)

12. BLO 12sc (12)

- Begin to stuff the arm gradually with fiberfill. Stuff the lower part (palm) so that it remains flat (see photo)



13. 12sc (12)

- Change color to turquoise. Cut the yellow yarn.

- 14-16. 12sc (3 rounds)

- Change color to pink. Cut the turquoise yarn.

- 17-19. 12sc (3 rounds)

- Change color to red. Cut the pink yarn.

- 20-22. 12sc (3 rounds)

- Change color to light green. Cut the red yarn.

- 23-25. 12sc (3 rounds)

- Change color to lilac. Cut the light green yarn.

- 26-28. 12sc (3 rounds)

- Cut the yarn, fasten off, hide the ends.

- Attach the yellow yarn to the first unused front loop of round 11 (keep the palm away from you) and work: (5sc, inc)*2. Cut the yarn, fasten off, hide the ends.



Legs (make 2)

Start in brown color.

Ch8, from the second chain on the hook:

1. 6sc, 3sc in the last chain, on the other side of the chain: 5sc, inc (16)
2. inc, 5sc, 3inc, 5sc, 2inc (22)
3. 1sc, inc, 5sc, (1sc, inc)*3, 5sc, (1sc, inc)*2 (28)
4. 2sc, inc, 5sc, (2sc, inc)*3, 5sc, (2sc, inc)*2 (34)

Prepare the insoles. On thick cardboard or plastic (for example, a container lid), circle the part, cut it out, try it on and put it aside for now. Make 2 insoles for 2 shoes at once.

Change color to red. Cut the brown yarn.

5. BLO 34sc (34)
- 6-7. 34sc (2 rounds)
8. 32sc - short round (you can have another number of stitches).

Shift the marker. It should run along the back of the leg, in the center of the heel.

Guideline – the foundation chain. Align the marker in the process with extra sc (the marker passes along the back of the leg in the middle). Fix the insole with hot glue.

9. 6sc, (1sc, dec)*7, 7sc (27)
10. 6sl st, 7dec, 7sl st (20)
11. (2sc, dec)*5 (15)

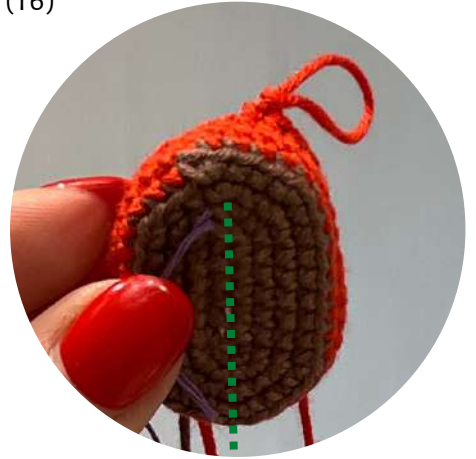
Change color to white. Cut the red yarn.

12. BLO 15sc (15)
- 13-14. 15sc (2 rounds)

Change color to light beige. Cut the white yarn. Begin to stuff the leg gradually with fiberfill.

If desired insert a wire frame.

15. BLO: 7sc, inc, 7sc (16)
16. 16sc (16)
17. inc, 15sc (17)
18. 16sc, inc (18)
- 19-25. 18sc (7 rounds)
26. 4sc, inc, 8sc, inc, 4sc (20)
- 27-31. 20sc (5 rounds)
32. (9sc, inc)*2 (22)
33. 22sc (22)
34. 5sc, inc, 10sc, inc, 5sc (24)



- Cut the yarn, fasten off, leave the end for sewing pieces.
- Attach the brown yarn to the first unused front loop of round 4 and work (hold the foot away from you) 34sc. Cut the yarn, fasten off, hide the ends.

Pant legs (make 2)

Crochet in blue color. Ch30, connect in a circle (the marker of the beginning of the round should pass along the back of the leg in the middle. Align the marker in the process with extra sc):

1-2. 30sc (2 rounds)

3. 10sc, FLO 10sc, 10sc in both loops (30)

4-5. 30sc (2 rounds)

6. 10sc, 10sc with front back loops of round 2, 10sc (30)

7. 30sc (30)

8. 4sc, dec, (8sc, dec)*2, 4sc (27)

9-10. 27sc (2 rounds)

11. (7sc, dec)*3 (24)

Right leg:

12-26. 24sc (15 rounds)

Left leg:

12-15. 24sc (4 rounds)

16. 8sc, ch8, skip 8sc, 8sc (24)

17. 8sc, 8sc on the chain, 8sc (24)

18-26. 24sc (9 rounds)



- At this stage, align the marker of the beginning of the round so that it is on the back of the leg, exactly in the middle.
- On the left leg crochet 16sc. Cut the yarn, fasten off, hide the ends.
- On the right leg crochet 8sc. Do not cut the yarn.
- Insert the legs into the pants (the marker of the beginning of the round on the legs and pants runs in the back in the middle). Connect the first unused stitch on the leg with the first stitch on the pant (additional stitches after round 26 are not taken into account) and sew with the remaining thread, picking up both loops on the leg and the back loops on the pant (see photo)



Body

Take the right pant leg (without hole) and work:

1. ch1, (FLO on the left leg, starting from the first unused stitch: 24sc), 1sc on the chain, (FLO 24sc on the right leg) (50). Twist the wire frame together.

2. inc, 49sc (51)

+1 extra sc – place a marker of the beginning of the round. It runs in the middle of the back.

If necessary, crochet extra sc.

3-7. 51sc (5 rounds)

8. (15sc, dec)*3 (48)

9-11. 48sc (3 rounds)

12. 7sc, dec, (14sc, dec)*2, 7sc (45)

13. 45sc (45)

- Change color to pink. Cut the blue yarn.

14. BLO 45sc (45)

15. (13sc, dec)*3 (42)

16. 42sc (42)

- Change color to red. Cut the pink yarn.

17-19. 42sc (3 rounds)

- Change color to light green. Cut the red yarn.

Begin to stuff the body gradually with fiberfill.

20-21. 42sc (2 rounds)

22. 6sc, dec, (12sc, dec)*2, 6sc (39)

- Change color to lilac. Cut the light green yarn.

23-24. 39sc (2 rounds)



Join the arms.

Be careful when attaching the arms. Make sure they are on the sides and the thumbs point forward.

25. 8sc on the body, 3sc on the left arm and body, inserting the hook from the wrong side of the arm, 17sc on the body, 3sc on the right arm and body, 8sc on the body (39)

- Change color to yellow. Cut the lilac yarn.

26. 8sc on the body, 9sc on the left arm, 17sc on the body, 9sc on the right arm, 8sc on the body (51)

Twist the wire frame from the arms with the main frame.

27. 51sc (51)

28. (15sc, dec)*3 (48)

- Change color to turquoise. Cut the yellow yarn.

29. 48sc (48)

30. 2sc, dec, (4sc, dec)*7, 2sc (40)

31. (3sc, dec)*8 (32)

- Change color to pink. Cut the turquoise yarn.

32. (2sc, dec)*8 (24)

33. 3sc, sc3tog*2, 6sc, sc3tog*2, 3sc (16)

- Change color to light beige. Cut the pink yarn.



34. BLO 16sc (16)
35. (2sc, dec)*4 (12)
36. 12sc (12)
37. (1sc, dec)*4 (8)

- Cut the yarn, fasten off, leave the end for sewing pieces.
- Trim the frame if necessary. It should come out of the neck by about 3-4cm. Wrap the end of the wire with insulating tape.



Collar



Crochet in white color. Leave one front loop in the front in the center unused (marked with a marker in the photo), attach the yarn to the next loop on the right (relative to the body of the doll) and work in rows (keep the feet towards you)

1. 15sc (15), t-ch, turn
2. BLO: 2sc, inc, (4sc, inc)*2, 2sc (18), t-ch, turn
3. FLO: 1sc, inc, (2sc, inc)*5, 1sc (24), t-ch, turn
4. BLO: (inc, 3sc)*3, (3sc, inc)*3 (30)

- Make an edging from the corner of the collar with sc to the unused loop on the neck, then to the second corner of the collar.
- Cut the yarn, fasten off, weave in the ends
- If the collar bulges, sew it on in the marked places with sewing threads.



Crop Top

Crochet in light lilac color. Ch51, connect in a circle and work:

1. 4sc, 3sc inc, 14sl st, 3sc inc, 11sc, 3sc inc, 14sl st, 3sc inc, 4sc (59)
2. 5sc, inc, ch7, skip 16 stitches, inc, 13sc, inc, ch7, skip 16 stitches, inc, 5sc (45)
3. 7sc, 7sc on the chain, 17sc, 7sc on the chain, 7sc (45)
4. 45sc (45)
5. (14sc, inc)*3 (48)
- 6-7. 48sc (2 rounds)
8. (15sc, inc)*3 (51)
- 9-10. 51sc (2 rounds)
11. (16sc, inc)*3 (54)
- 12-13. 54sc (2 rounds)
14. (17sc, inc)*3 (57)
- 15-16. 57sc (2 rounds)
17. (18sc, inc)*3 (60)

Change color to white.

Leave the light lilac yarn in front.

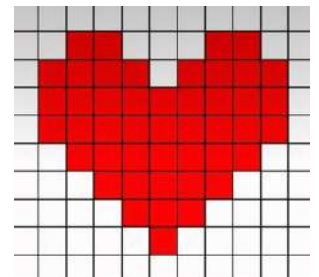
18. BLO 60sc (60)

19. (skip 1sc, 4dc in the next stitch, skip 1sc, sl st)*repeat to end of round

- Cut the white yarn, fasten off, weave in the ends.
- Using light lilac yarn, crochet 60 sc in front loops of round 17 (hold the top with the straps towards us). Cut the yarn, fasten off, weave in the ends.
- Using a red embroidery thread, embroider a heart with cross stitches in front in the center of the top according to the scheme.
- Put the top on the doll, then sew on the head.



In the process, be sure to try on the crop top. Adjust, if necessary, the size of the hook or the number of increases.



Forelegs (make 2)

Crochet in gray color. Do not stuff.

1. 6sc in a MR (6)
 - 2-7. 6sc (6 rounds)
- Cut the yarn, fasten off, hide the ends.



Tail

Crochet in gray color. Stuff as you go approx. to the middle.

1. 6sc in a MR (6)
 2. (2sc, inc)*2 (8)
 3. (3sc, inc)*2 (10)
 - 4-6. 10sc (3 rounds)
 7. (3sc, dec)*2 (8)
 8. 8sc (8)
 9. (2sc, dec)*2 (6)
 - 10-16. 6sc (7 rounds)
- Cut the yarn, fasten off, hide the ends.



Hind Legs (make 2)

Crochet in gray color. Do not stuff yet.

1. 6sc in a MR (6)
 2. (2sc, inc)*2 (8)
 - 3-4. 8sc (2 rounds)
 5. (3sc, inc)*2 (10)
 - 6-7. 10sc (2 rounds)
- On the right leg cut the yarn, fasten off, hide the ends.
 - Do not cut the yarn on the left leg.



Body

Continue crocheting from the left leg.

1. ch5, 10sc on the right leg (start in the first unused stitch), 5sc on the chain, 5sc on the left leg.
- Short round. Place a marker of the beginning of the round. It will pass on the side of the body, in the middle. If necessary, crochet extra sc.

2. 5sc on the left leg, ((1sc, inc)*2, 1sc on the chain), 20sc (32)
3. 32sc (32)
4. (inc, 15sc)*2 (34)

Join the tail:

5. 24sc on the body, 3sc on the tail and body, inserting the hook from the wrong side of the tail, 7sc on the body (34)
6. 24sc on the body, 3sc on the tail, 7sc on the body (34)



Make a wire frame. Take a wire 50 cm long and fold it in half. Insert the wire with the folded side into the tail. Bend the two ends of the wire as shown in the photo and make the frame of the legs.



7-13. 34sc (7 rounds)

14. 5sc, dec, 2sc, dec, 23sc (32)

Join the forelegs:

Be careful. The forelegs are located not on the sides, but in front of the body.

15. 2sc on the body, 3sc on the left foreleg and body, inserting the hook from the wrong side of the leg, 5sc on the body, 3sc on the right foreleg and body, 19sc on the body (32)

16. 2sc on the body, 3sc on the left foreleg, 5sc on the body, 3sc on the right foreleg, 19sc on the body (32)

- Make a frame for the forelegs. Bend the two ends of the wire, as shown in the photo, and insert it into the forelegs.

17-19. 32sc (3 rounds)

20. (14sc, dec)*2 (30)

21-24. 30sc (4 rounds)

25. (3sc, dec)*6 (24)

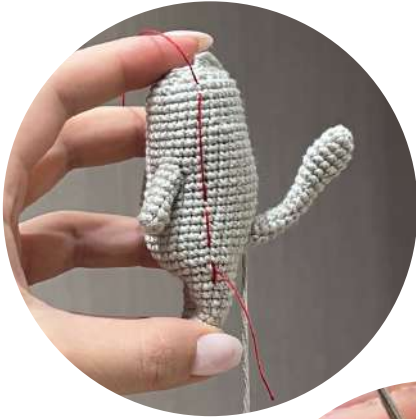
26. (2sc, dec)*6 (18)

27. (1sc, dec)*6 (12)



- Stuff the body with fiberfill.
- Cut the yarn, leaving the end for sewing. Make sure that the marker of the beginning of the round is on the side in the middle.

- Sew up the opening, grabbing the front loops from the front side and the back loops from the back (see photo)
- Hide the ends inside.



Ears (make 2)

Crochet in gray color.

1. 1sc, 1hdc, 1dc, 1hdc, 1sc - in a MR (5)

- Cut the yarn, leaving the end for sewing pieces. Pull the ring.



Decoration

Using a dark gray thread, embroider stripes on the head and on the sides of the body.

Split the dark gray thread in half and embroider the navel and claws on the hind legs.



Cut out circles from white felt (you can use a hole punch) and cut the edge just above the middle.



Embroider the eyelids with a gray thread (4-5 stitches with back stitches)



Embroider the muzzle and whiskers with black sewing thread.
Tint the nose with blush.
Glue eyes on the clear super glue.
Using black fabric paint, draw pupils.



Sew the ears to the head.

