

CROCHET PATTERN MONSTER OUTFIT

Designed by Sevgi AKI



This pattern is designed after long work hours with love for people who already have basic crochet skills. The pattern is for personal use only. Any copying and distribution of this document is prohibited!

Thank you for understanding!

[@sevgili_ilmkler](https://www.instagram.com/sevgili_ilmkler)

Materials

1. Body yarnart jeans (72)
2. Hair schachenmayr catania (161)
3. Hair, arms and feet yarnart jeans (80)
4. Head yarnart jeans (73)
5. Eyes and tooth yarnart jeans (68,03)
6. 8mm eyes, Brown,black and white thine yarn for eyes
7. 1.60 hook
8. Fiber

Abbreinciations

Mr : magic ring

Sc : single crochet

dec : decrease

inc : increase

Ch : chain

Sl st : slip stitch

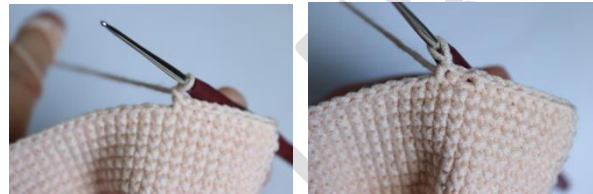
BLO : Take from rear loop

FLO : Take from front loop

Hdc : half double crochet

Head (start with body color)

1. 6sc in mr : 6sc
2. (inc)*6 : 12sc
3. (sc, inc)*6 : 18sc
4. (2sc, inc)*6 : 24sc
5. (3sc, inc)*6 : 30sc
6. (4sc, inc)*6 : 36sc
7. (5sc, inc)*6 : 42sc
8. (6sc, inc)*6 : 48sc
9. (7sc, inc)*6 : 54sc
- 10-17. 54sc (8 rounds)
18. 22sc, 1ch, (skip 1sc), 9sc
1ch, (skip 1sc), 21sc : 54sc
19. 20sc, (inc, 2sc)*6, 16sc : 60sc
- 20-22. 60sc (3 rounds)



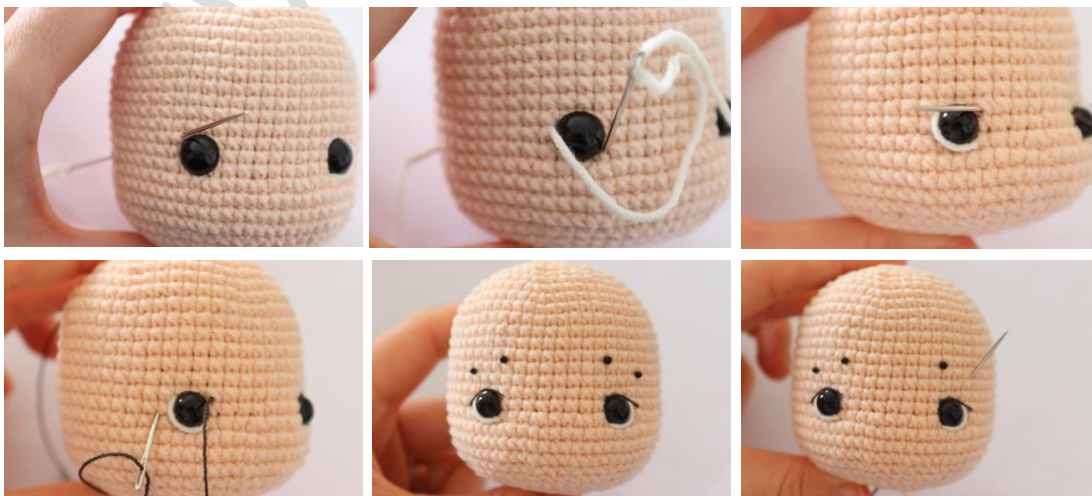
Place the eyes to
the spaces.

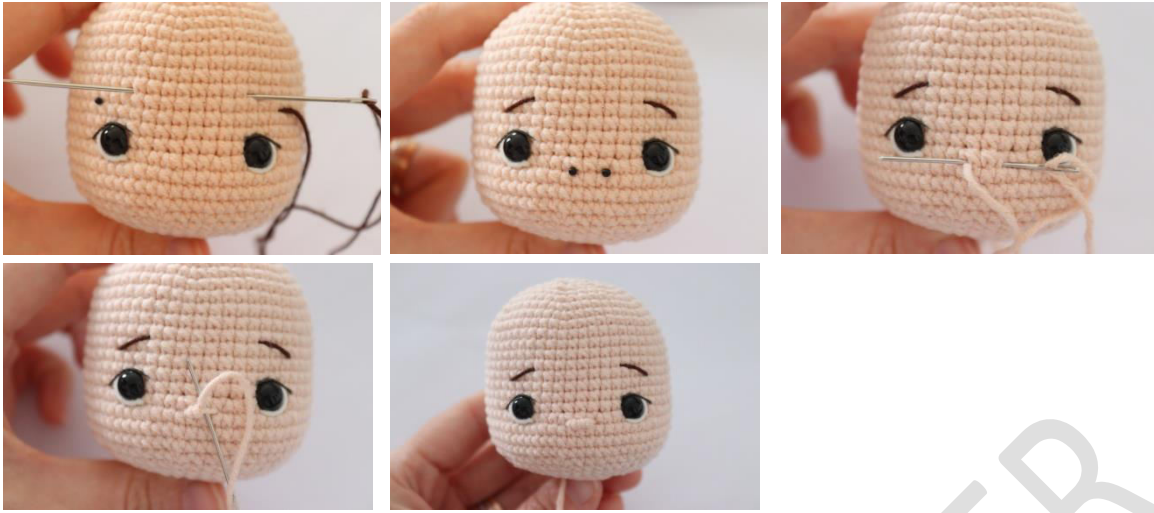


23. 20sc, (dec, 2sc)*6, 16sc : 54sc
24. (7sc, dec)*6 : 48sc
25. 3sc, dec, (6sc, dec)*5, 3sc : 42sc
26. (5sc, dec)*6 : 36sc fill out the head
27. 2sc, dec, (4sc, dec)*5, 2sc : 30sc
28. (3sc, dec)*6 : 24sc
29. sc, dec, (2sc, dec)*5, sc : 18sc

Finish it with sl st.

Knitting the face





Hair (start with catania 161)

1. 6sc in mr : 6sc
2. (inc)*6 : 12sc
3. (sc, inc)*6 : 18sc
4. (2sc, inc)*6 : 24sc
5. (3sc, inc)*6 : 30sc
6. (4sc, inc)*6 : 36sc
7. (5sc, inc)*6 : 42sc
8. (6sc, inc)*6 : 48sc
9. (7sc, inc)*6 : 54sc
- 10-16. 54sc (7 rounds)
17. 20sc,
 *(18ch start from 3rd 16hdc, combine with sl st)*2



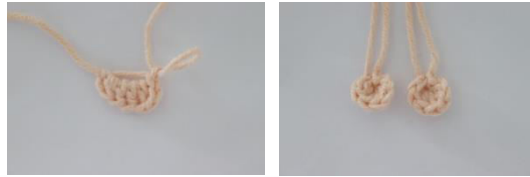
- *10ch start from 3rd 8hdc, combine with sl st,
 - *11ch start from 3rd 9hdc, combine with sl st,
 - *(12ch start from 3rd 10hdc, combine with sl st)*4,
 - *11ch start from 3rd 9hdc, combine with sl st,
 - *10ch start from 3rd 8hdc, combine with sl st,
 - *(18ch start from 3rd 16hdc, combine with sl st)*2,
- 20sc Let a bit yarn for sewing and cut the yarn.

Ears (make 2) (start with body color)

Into mr

*2ch, 4dc, 2ch, sl st

Close the magic ring.



*Turn inside out of the hairs.

*Sew the ears at a distance of 7sc from the eyes.

*Put the hair wig on the head and fix it with sewing pins.



Costume (start with purple yarn)

1. 6sc in mr : 6sc
2. (inc)*6 : 12sc
3. (sc, inc)*6 : 18sc
4. (2sc, inc)*6 : 24sc
5. (3sc, inc)*6 : 30sc
6. (4sc, inc)*6 : 36sc
- 7-8. 36sc (rounds)
9. (4sc, dec)*6 : 30sc
10. FLO (2sc, inc, sc, inc)*6 : 42sc
- 11-12. 42sc (2 rounds)
13. (5sc, dec)*6 : 36sc
14. FLO (2sc, inc)*12 : 48sc
- 15-16. 48sc (2 rounds)
17. (6sc, dec)*6 : 42sc
18. FLO (2sc, inc, 3sc, inc)*6 : 54sc



- 19-20. 54sc (2 rounds)
 21. (7sc, dec)*6 : 48sc
 22. BLO 3sc, dec, (6sc, dec)*5, 3sc : 42sc
 23. (5sc, dec)*6 : 36sc **fill out the body.**
 24. 2sc, dec, (4sc, dec)*5, 2sc : 30sc
 25. (3sc, dec)*6 : 24sc
 26. sc, dec, (2sc, dec)*5, sc : 18sc
- *Let a bit yarn for sewing and cut the yarn.



1. FLO (3sc, inc)*12 : 60sc
 - 2-3. 60sc (2 rounds)
- *Let a bit yarn for sewing and cut the yarn.



Hat

1. 6sc in mr : 6sc
2. (inc)*6 : 12sc
3. (sc, inc)*6 : 18sc
4. (2sc, inc)*6 : 24sc
5. (3sc, inc)*6 : 30sc
6. (4sc, inc)*6 : 36sc
7. (5sc, inc)*6 : 42sc
8. (6sc, inc)*6 : 48sc
9. (7sc, inc)*6 : 54sc
10. (8sc, inc)*6 : 60sc
11. (9sc, inc)*6 : 66sc
- 12-14. 66sc (3 rounds)
15. (21sc, inc)*3 : 69sc
- 16-19. 69sc (4 round)



*cut the yarn and hide. Knit the hat to the back of the costume with 7sc.



Grey hair (start with grey yarn)

1. 6sc in mr : 6sc
2. (inc)*6 : 12sc
3. BLO(sc, inc)*6 : 18sc
4. (2sc, inc)*6 : 24sc
5. BLO(3sc, inc)*6 : 30sc
6. (4sc, inc)*6 : 36sc
7. BLO(5sc, inc)*6 : 42sc
8. (6sc, inc)*6 : 48sc
9. BLO(7sc, inc)*6 : 54sc
10. (5ch start from 2nd, knit double sc for all (8sc), sc)*27



PART 1: knit 2ch and move to the 9th row,
FLO (4ch start from 2nd, knit double sc for all (6ch), sc)*24



PART 2: knit 2ch and move to the 7th row,
FLO (4ch start from 2nd, knit double sc for all (6ch), sc)*21

PART 2: knit 2ch and move to the 5th row,
FLO (4ch start from 2nd, knit double sc for all (6ch), sc)*15

PART 2: knit 2ch and move to the 3th row,
FLO (4ch start from 2nd, knit double sc for all (6ch), sc)*9

*Let a bit yarn for sewing and cut the yarn.

*Knit the hairs to the center of the hat.



Tooth (make 7)

6ch start from 3rd

-2hdc, sc, 2sl st, sc, 2hdc

*Let a bit yarn for sewing and cut the yarn.

*Place 4 teeth to the hat and 3 of them to the costume.



Eyes (start with dark grey)(make 2)

1. 6sc in mr : 6sc

2-9. 6sc (8 rounds)

10. (inc)*6 : 12sc

11. (sc, inc)*6 : 18sc

12. (2sc, inc)*6 : 24sc

13-14. 24sc (2 rounds)

*cut the yarn and hide.



Eye: (make 2)

1. 6sc in mr : 6sc

2. (inc)*6 : 12sc

3. (sc, inc)*6 : 18sc

4. (2sc, inc)*6 : 24sc

5-6. 24sc (2 rounds)

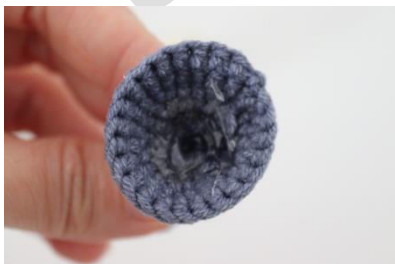
7. (2sc, dec)*6 : 18x

*Put the eye in the center.

8. (sc, dec)*6 : 12x

*cut the yarn.

*Stick the eye to the eyehole bit slicon.



*Knit the eyes between 3 and 4 rows of the hairs.



Arm (start with grey)(make 2)

1. 6sc in mr : 6sc
2. (sc, inc)*3 : 9sc
3. (2sc, inc)*3 : 12sc
- 4-9. 12sc (6 rounds)

- *Let a bit yarn for sewing and cut the yarn
- *embroider buds to the arms like into photos.



Foot(make 2)

1. 6sc in mr : 6sc
2. (inc)*6 : 12sc
- 3-8. 12sc (6 rounds)

- *Let a bit yarn for sewing and cut the yarn
- *Embroider buds to the feet.
- *Knit the feet to the bottom.
- *Knit the arms between 20 and 21 rows.

